

**TOURIST ACCOMMODATION**

AUSTRALIA

EMBARGO: 11.30AM (CANBERRA TIME) THURS 22 APR 2004

C O N T E N T S

	<i>page</i>
Notes	2
Summary of findings	3
List of tables	7

ADDITIONAL INFORMATION

Explanatory Notes	49
Appendix 1: Break in time series	52
Appendix 2: Factor tables	56
Glossary	72

NOTE!
Revised data for
September quarter 2003.
See 'Data Revisions'
note on page 2.

I N Q U I R I E S

- For further information about these and related statistics, contact the National Information and Referral Service on 1300 135 070 or Transport and Tourism Business Statistics Centre on Brisbane (07) 3222 6185.

NOTES

FORTHCOMING ISSUES

<i>ISSUE (Quarter)</i>	<i>RELEASE DATE</i>
March 2004	8 July 2004
June 2004	8 October 2004



INTRODUCTION

This publication presents results from the quarterly Survey of Tourist Accommodation (STA). The scope of the regular, annual STA includes hotels, motels and guest houses and serviced apartments with 15 or more rooms.

For the four quarters of 2003 the scope of the STA has been expanded to include:

- holiday flats, units and houses of letting entities with 15 or more rooms or units
- caravan parks with 40 or more powered sites
- visitor hostels with 25 or more bed spaces.

HOTELS, MOTELS AND GUEST HOUSES AND SERVICED APARTMENTS

DATA QUALITY IMPROVEMENTS

In the June quarter 2003 the ABS identified 132 hotels, motels and guest houses and serviced apartments which had been operating for a number of quarters but were not on the STA frame. These additional establishments were included in the STA from the June quarter 2003.

BREAK IN TIME SERIES

The addition of the 132 tourism establishments resulted in a break in time series between the March and June quarters 2003. The impact of the break in time series is explained in Appendix 1. Particular care needs to be taken for all calculations of percentage changes that cross the break in series.

HOLIDAY FLATS, UNITS AND HOUSES, CARAVAN PARKS AND VISITOR HOSTELS

The ABS has collected data for holiday flats, units and houses, caravan parks and visitor hostels for all quarters in 2003. These data will be released after December quarter 2003 data has been collected and processed.

DATA REVISIONS

Revisions have been made to the September quarter 2003 data in Table 2. Revision tables 19 to 21 are included on pages 42 to 47 of this publication. These provide revisions to Australia, Victoria and Melbourne Tourism Region for persons employed in hotels for the September quarter 2003.

Dennis Trewin
Australian Statistician

SUMMARY OF FINDINGS

BREAK IN TIME SERIES

The addition of 132 tourism establishments has resulted in a break in time series between the March and June quarters 2003. The impact of the break in time series is explained in Appendix 1.

Particular care needs to be taken for all calculations of percentage changes that cross the break in series. Where appropriate the effect of the break is taken into account in the analysis below.

SEASONALLY ADJUSTED AND TREND

DEC QTR SEASONALLY ADJUSTED AND TREND KEY FIGURES (a), Hotels, motels and guest houses and serviced apartments—Australia

	Dec qtr 2002	Sep qtr 2003	Dec qtr 2003
Seasonally Adjusted			
Room occupancy rate (%)	60.3	61.0	62.2
Takings from accommodation ('000)	1 245 637	1 341 249	1 421 472
Trend			
Room occupancy rate (%)	58.8	60.5	61.9
Takings from accommodation ('000)	1 221 651	1 342 248	1 399 262

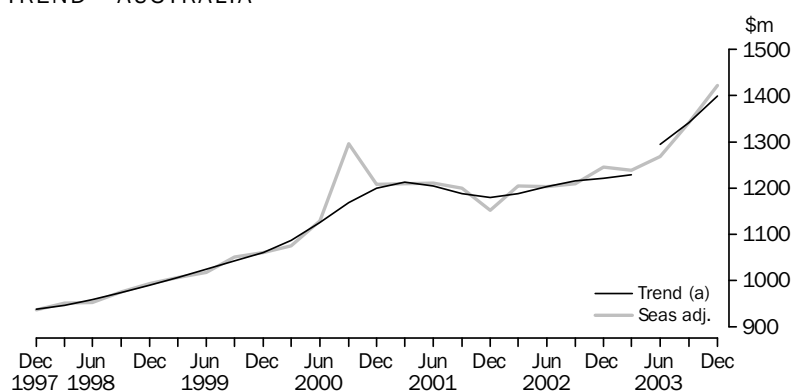
(a) Break in time series between the March and June quarters 2003. See Appendix 1 for details.

Accommodation takings

The trend estimate of the total accommodation takings for hotels, motels and guest houses and serviced apartments combined was \$1,399.3 million in the December quarter 2003. The trend estimate rose 4.2% in December quarter 2003 compared with September quarter 2003.

The seasonally adjusted estimate of the total accommodation takings rose by 6.0% in December quarter 2003 compared with September quarter 2003, to \$1,421.5 million.

ACCOMMODATION TAKINGS (a), SEASONALLY ADJUSTED AND TREND—AUSTRALIA



(a) Break in time series between the March and June quarters 2003. See Appendix 1 for details.

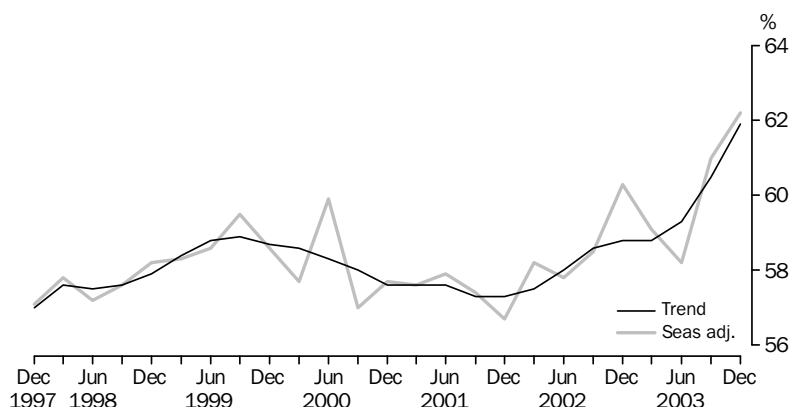
Room occupancy rate

The room occupancy rate, being derived from number of rooms and number of nights occupied, is not subject to a break in series. This is explained in Appendix 1.

SUMMARY OF FINDINGS *continued*

Room occupancy rate
continued

ROOM OCCUPANCY RATE (a), SEASONALLY ADJUSTED AND TREND—AUSTRALIA



(a) Room occupancy rates are not subject to a break in series.

The trend estimate of the room occupancy rate for hotels, motels and guest houses and serviced apartments combined reached a record level in the December quarter 2003. It rose 1.4 percentage points from 60.5% in September quarter 2003 to 61.9% in December quarter 2003. The trend estimate has been increasing since the March quarter 2002.

The seasonally adjusted estimate of the room occupancy rate rose by 1.2 percentage points in December quarter 2003 compared with September quarter 2003, to 62.2%.

ORIGINAL

DECEMBER QUARTER ORIGINAL KEY FIGURES, Australia(a)

	Dec qtr 2002	Sep qtr 2003	Dec qtr 2003
Hotels			
Guest rooms (no.)	77 516	77 914	78 720
Room nights occupied ('000)	4 769.8	4 809.5	4 996.5
Room occupancy rate (%)	67.2	67.1	69.4
Takings from accommodation (\$'000)	668 532	664 512	759 603
Takings per room night occupied (\$)	140.2	138.2	152.0
Motels and guest houses			
Guest rooms (no.)	83 565	85 198	85 390
Room nights occupied ('000)	4 172.9	4 356.4	4 380.2
Room occupancy rate (%)	54.3	55.6	55.9
Takings from accommodation (\$'000)	376 270	399 637	407 394
Takings per room night occupied (\$)	90.2	91.7	93.0
Serviced apartments			
Guest rooms (no.)	35 350	39 921	40 351
Room nights occupied ('000)	2 175.3	2 492.2	2 524.7
Room occupancy rate (%)	66.9	68.3	68.1
Takings from accommodation (\$'000)	269 252	309 339	332 348
Takings per room night occupied (\$)	123.8	124.1	131.6
Total			
Guest rooms (no.)	196 431	203 033	204 461
Room nights occupied ('000)	11 118.0	11 658.1	11 901.3
Room occupancy rate (%)	61.7	62.5	63.5
Takings from accommodation (\$'000)	1 314 053	1 373 488	1 499 344
Takings per room night occupied (\$)	118.2	117.8	126.0

(a) Break in time series between the March and June quarters 2003. See Appendix 1 for details.

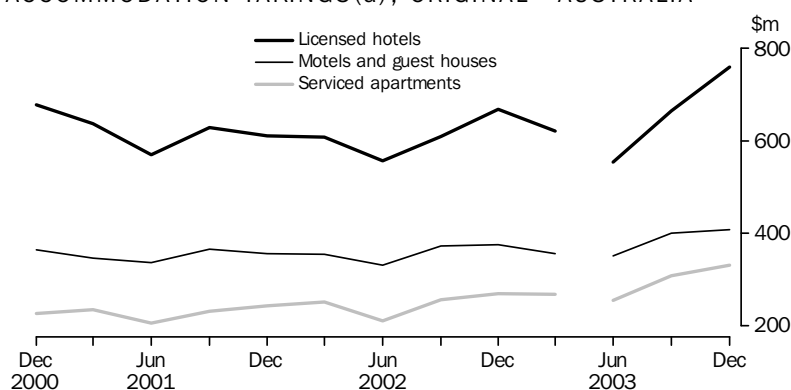
SUMMARY OF FINDINGS *continued*

Accommodation takings

In December quarter 2003, accommodation takings for hotels, motels and guest houses and serviced apartments combined were \$1,499.3 million. This was an increase of 9.2% (\$125.9 million) from September quarter 2003. The average takings per room night occupied for hotels, motels and guest houses and serviced apartments combined was \$126.00.

Hotels were the highest contributor to accommodation takings with \$759.6 million (50.7%). Takings per room night occupied in the December quarter 2003 were highest for hotels at \$152.00.

ACCOMMODATION TAKINGS (a), ORIGINAL—AUSTRALIA



(a) Break in time series between the March and June quarters 2003. See Appendix 1 for details.

The contributions of accommodation takings in the December quarter 2003 for hotels, motels and guest houses and serviced apartments combined were highest in New South Wales (35.1%) and Queensland (27.5%) and lowest in the Northern Territory (2.3%).

Room nights occupied

Total room nights occupied were 11.9 million in December quarter 2003 for hotels, motels and guest houses and serviced apartments combined. Room nights occupied increased by 2.1% (0.2 million) from September quarter 2003 to December quarter 2003.

Of the total, hotels contributed 5.0 million (42.0%) while motels and guest houses contributed 4.4 million (36.8%). Serviced apartments had the lowest room nights occupied at 2.5 million (21.2%) room nights.

Room occupancy rate

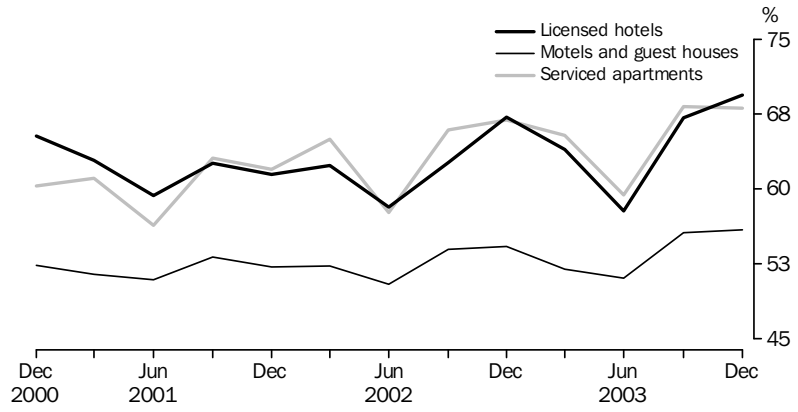
The room occupancy rate for hotels, motels and guest houses and serviced apartments combined was 63.5% in December quarter 2003 compared with 62.5% in September quarter 2003. This was an increase of 1.0 percentage point. Hotels recorded the largest increase in the room occupancy rate at 2.3 percentage points. Serviced apartments recorded a decrease of 0.2 percentage points.

The Australian Capital Territory recorded the highest room occupancy rate for hotels, motels and guest houses and serviced apartments combined with 70.3%. This was followed by Queensland (67.3%) and New South Wales (64.6%).

SUMMARY OF FINDINGS *continued*

Room occupancy rate
continued

ROOM OCCUPANCY RATES(a), ORIGINAL—AUSTRALIA



(a) Room occupancy rates are not subject to a break in series.

LIST OF TABLES

page

HOTELS, MOTELS AND GUEST HOUSES AND SERVICED APARTMENTS

ORIGINAL, SEASONALLY ADJUSTED AND TREND

1 Australia	9
--------------------	---

SUMMARY

2 Australia	10
--------------------	----

STAR GRADING

3 Australia	12
4 New South Wales	14
5 Victoria	16
6 Queensland	18
7 South Australia	20
8 Western Australia	22
9 Tasmania	24
10 Northern Territory	26
11 Australian Capital Territory	28

TOURISM REGIONS

12 New South Wales	30
13 Victoria	32
14 Queensland	34
15 South Australia	36
16 Western Australia	38
17 Tasmania	39
18 Northern Territory and Australian Capital Territory	40

REVISION TABLES

19 Hotels, motels and serviced apartments, Star grading, Australia	42
20 Hotels, motels and serviced apartments, Star grading, Victoria	44
21 Hotels, motels and serviced apartments, Tourism regions, Victoria	46

Period	ORIGINAL		SEASONALLY ADJUSTED		TREND	
	Room occupancy rate	Takings from accommodation(a)	Room occupancy rate	Takings from accommodation(a)	Room occupancy rate	Takings from accommodation(a)
	%	\$'000	%	\$'000	%	\$'000
2000						
June Quarter	57.1	1 039 478	59.9	1 129 906	58.3	1 125 637
September Quarter	58.4	1 330 113	57.0	1 296 902	58.0	1 169 382
December Quarter	58.8	1 267 090	57.7	1 207 586	57.6	1 200 159
2001						
March Quarter	57.7	1 218 107	57.6	1 210 065	57.6	1 213 409
June Quarter	55.2	1 111 337	57.9	1 211 049	57.6	1 204 727
September Quarter	58.7	1 226 522	57.4	1 199 009	57.3	1 187 757
December Quarter	57.6	1 209 554	56.7	1 151 765	57.3	1 180 834
2002						
March Quarter	58.6	1 213 991	58.2	1 205 523	57.5	1 187 524
June Quarter	54.8	1 100 074	57.8	1 203 042	58.0	1 202 325
September Quarter	59.6	1 236 869	58.5	1 210 064	58.6	1 216 695
December Quarter	61.7	1 314 053	60.3	1 245 637	58.8	1 221 651
2003						
March Quarter	59.1	1 244 695	59.1	1 239 822	58.8	1 229 687
June Quarter	55.3	1 159 500	58.2	1 268 874	59.3	1 294 322
September Quarter	62.5	1 373 488	61.0	1 341 249	60.5	1 342 248
December Quarter	63.5	1 499 344	62.2	1 421 472	61.9	1 399 262

(a) Break in time series between the March and June quarters 2003. See Appendix 1 for details.

SUMMARY OF HOTELS, MOTELS AND SERVICED APARTMENTS, Australia

<i>Period</i>	<i>Establishments(a)</i>	<i>Guest rooms(a)</i>	<i>Bed spaces(a)</i>	<i>Persons employed(a)</i>	<i>Room nights occupied(a)</i>	<i>Room occupancy rate</i>
	no.	no.	no.	no.	'000	%
.....						
LICENSED HOTELS WITH FACILITIES						
2002						
September Quarter	780	77 603	203 531	69 923	4 470	62.7
December Quarter	777	77 516	203 238	69 699	4 770	67.2
2003						
March Quarter	781	77 477	203 876	68 458	4 458	64.0
June Quarter	799	78 089	204 484	69 155	4 109	57.8
September Quarter	794	77 914	203 346	r70 105	4 810	67.1
December Quarter	796	78 720	202 962	70 046	4 996	69.4
Year ended December 2002	—	—	—	—	17 768	62.6
Year ended December 2003	—	—	—	—	18 373	64.6
.....						
MOTELS AND GUEST HOUSES WITH FACILITIES						
2002						
September Quarter	2 388	83 592	244 527	29 459	4 153	54.0
December Quarter	2 382	83 565	244 156	29 471	4 173	54.3
2003						
March Quarter	2 383	83 931	244 433	29 209	3 922	52.0
June Quarter	2 424	85 148	247 803	29 627	3 955	51.1
September Quarter	2 416	85 198	247 709	30 074	4 356	55.6
December Quarter	2 415	85 390	246 107	29 473	4 380	55.9
Year ended December 2002	—	—	—	—	16 136	52.8
Year ended December 2003	—	—	—	—	16 614	53.7
.....						
SERVICED APARTMENTS						
2002						
September Quarter	675	35 610	117 523	12 141	2 156	65.9
December Quarter	675	35 350	116 385	12 430	2 175	66.9
2003						
March Quarter	690	36 070	117 683	12 327	2 120	65.4
June Quarter	772	39 182	128 060	12 966	2 120	59.4
September Quarter	775	39 921	129 429	13 268	2 492	68.3
December Quarter	781	40 351	131 183	13 489	2 525	68.1
Year ended December 2002	—	—	—	—	8 244	63.9
Year ended December 2003	—	—	—	—	9 257	65.3
.....						
HOTELS, MOTELS AND SERVICED APARTMENTS						
2002						
September Quarter	3 843	196 805	565 581	111 523	10 778	59.6
December Quarter	3 834	196 431	563 779	111 600	11 118	61.7
2003						
March Quarter	3 854	197 478	565 992	109 994	10 501	59.1
June Quarter	3 995	202 419	580 347	111 748	10 184	55.3
September Quarter	3 985	203 033	580 484	r113 447	11 658	62.5
December Quarter	3 992	204 461	580 252	113 008	11 901	63.5
Year ended December 2002	—	—	—	—	42 149	58.7
Year ended December 2003	—	—	—	—	44 244	60.1

— nil or rounded to zero (including null cells)

(a) Break in time series between the March and June quarters 2003.

r revised

See Appendix 1 for details.

Period	Guest nights(a)	Bed occupancy rate	Guest arrivals(a)	Average length of stay	Takings from accommodation(a)
	'000	%	'000	days	\$'000
.....					
LICENSED HOTELS WITH FACILITIES					
2002					
September Quarter	7 439	39.8	3 218	2.3	609 027
December Quarter	7 987	42.9	3 417	2.3	668 532
2003					
March Quarter	7 381	40.3	3 143	2.3	621 399
June Quarter	6 607	35.5	2 876	2.3	553 849
September Quarter	7 940	42.4	3 340	2.4	664 512
December Quarter	8 298	44.7	3 590	2.3	759 603
Year ended December 2002	29 437	39.7	12 685	2.3	2 442 948
Year ended December 2003	30 225	40.7	12 949	2.3	2 599 363
.....					
MOTELS AND GUEST HOUSES WITH FACILITIES					
2002					
September Quarter	7 311	32.5	4 143	1.8	371 657
December Quarter	7 402	33.0	4 169	1.8	376 270
2003					
March Quarter	6 984	31.8	3 849	1.8	355 991
June Quarter	6 813	30.2	3 831	1.8	351 004
September Quarter	7 706	33.8	4 333	1.8	399 637
December Quarter	7 815	34.6	4 359	1.8	407 394
Year ended December 2002	28 466	31.8	16 013	1.8	1 433 159
Year ended December 2003	29 318	32.6	16 371	1.8	1 514 027
.....					
SERVICED APARTMENTS					
2002					
September Quarter	4 674	43.3	1 258	3.7	256 186
December Quarter	4 804	44.9	1 309	3.7	269 252
2003					
March Quarter	4 701	44.4	1 268	3.7	267 305
June Quarter	4 571	39.2	1 293	3.5	254 647
September Quarter	5 447	46.0	1 495	3.6	309 339
December Quarter	5 701	47.3	1 589	3.6	332 348
Year ended December 2002	17 990	42.2	4 934	3.6	988 881
Year ended December 2003	20 420	44.3	5 645	3.6	1 163 638
.....					
HOTELS, MOTELS AND SERVICED APARTMENTS					
2002					
September Quarter	19 424	37.4	8 619	2.3	1 236 869
December Quarter	20 193	39.0	8 894	2.3	1 314 053
2003					
March Quarter	19 066	37.5	8 260	2.3	1 244 695
June Quarter	17 991	34.1	8 000	2.2	1 159 500
September Quarter	21 093	39.6	9 167	2.3	1 373 488
December Quarter	21 814	41.0	9 539	2.3	1 499 344
Year ended December 2002	75 893	36.8	33 632	2.3	4 864 989
Year ended December 2003	79 963	38.0	34 965	2.3	5 277 028

(a) Break in time series between the March and June quarters 2003. See Appendix 1 for details.

Period	Licensed hotels with facilities	Motels and guest houses	Serviced apartments	STAR GRADING						Ungraded	Total
				1	2	3	4	5			
ESTABLISHMENTS, CAPACITY AND EMPLOYMENT (a) (no.)											
December Quarter 2002											
Establishments	777	2 382	675	63	446	1 845	952	110	418	3 834	
Guest rooms	77 516	83 565	35 350	2 238	13 231	69 161	72 764	24 505	14 532	196 431	
Bed spaces	203 238	244 156	116 385	7 077	38 727	203 525	208 337	63 764	42 349	563 779	
Persons employed	69 699	29 471	12 430	713	5 296	25 875	38 454	35 134	6 128	111 600	
December Quarter 2003											
Establishments	796	2 415	781	67	373	1 865	1 311	124	252	3 992	
Guest rooms	78 720	85 390	40 351	2 707	11 470	68 317	89 449	24 300	8 218	204 461	
Bed spaces	202 962	246 107	131 183	8 470	32 704	198 736	258 055	60 115	22 172	580 252	
Persons employed	70 046	29 473	13 489	587	4 970	23 587	45 144	35 033	3 687	113 008	
ROOM NIGHTS OCCUPIED (a) ('000)											
2002											
December Quarter	4 769.8	4 172.9	2 175.3	79.8	541.5	3 584.3	4 595.7	1 645.0	671.6	11 118.0	
2003											
October	1 717.9	1 607.3	884.4	44.2	168.2	1 303.7	1 998.6	574.7	120.3	4 209.6	
November	1 737.1	1 475.4	849.0	40.9	152.0	1 209.8	1 954.4	590.2	114.2	4 061.5	
December	1 541.5	1 297.6	791.2	40.6	139.0	1 086.7	1 746.5	513.4	104.1	3 630.3	
December Quarter	4 996.5	4 380.2	2 524.7	125.7	459.1	3 600.1	5 699.6	1 678.3	338.6	11 901.3	
ROOM OCCUPANCY RATE (%)											
2002											
December Quarter	67.2	54.3	66.9	38.8	44.8	56.4	68.9	73.0	50.4	61.7	
2003											
October	71.1	60.9	70.8	58.0	47.5	61.6	72.5	76.3	47.4	66.7	
November	74.1	57.7	70.2	50.7	44.2	59.1	73.3	81.0	47.4	66.5	
December	63.3	49.2	63.3	48.3	39.4	51.4	63.0	68.2	41.7	57.4	
December Quarter	69.4	55.9	68.1	52.2	43.7	57.4	69.6	75.1	45.5	63.5	
GUEST NIGHTS (a) ('000)											
2002											
December Quarter	7 986.8	7 401.9	4 803.9	130.3	975.5	6 631.9	8 421.0	2 755.7	1 278.3	20 192.6	
2003											
October	2 789.9	2 845.1	1 952.5	81.5	304.3	2 430.9	3 645.5	923.6	201.7	7 587.5	
November	2 772.3	2 529.1	1 812.8	74.7	264.2	2 184.4	3 456.7	938.2	196.0	7 114.3	
December	2 735.8	2 440.4	1 935.7	76.2	259.3	2 158.4	3 509.9	916.6	191.6	7 112.0	
December Quarter	8 298.1	7 814.6	5 701.1	232.3	827.8	6 773.8	10 612.1	2 778.4	589.4	21 813.8	
BED OCCUPANCY RATE (%)											
2002											
December Quarter	42.9	33.0	44.9	20.0	27.6	35.5	44.0	47.0	32.9	39.0	
2003											
October	44.8	37.4	48.1	37.3	30.2	39.5	45.8	49.6	29.4	42.4	
November	45.8	34.3	46.1	29.5	27.0	36.7	44.8	52.1	30.2	41.0	
December	43.6	32.1	47.7	29.0	25.8	35.1	43.9	49.2	28.5	39.6	
December Quarter	44.7	34.6	47.3	31.6	27.7	37.1	44.8	50.3	29.4	41.0	

(a) Break in time series between the March and June quarters 2003. See Appendix 1 for details.

Period	Licensed hotels with facilities	Motels and guest houses	Serviced apartments	STAR GRADING						Ungraded	Total
				1	2	3	4	5			
GUEST ARRIVALS (a) ('000)											
2002											
December Quarter	3 416.7	4 168.5	1 308.6	78.3	557.4	3 349.0	3 321.2	1 098.0	490.0	8 893.9	
2003											
October	1 210.2	1 589.9	551.3	54.3	170.7	1 206.2	1 471.8	361.8	86.5	3 351.3	
November	1 201.3	1 398.6	518.1	50.6	146.4	1 061.3	1 410.8	364.3	84.7	3 118.1	
December	1 178.6	1 370.7	520.0	53.2	142.1	1 051.7	1 381.4	360.3	80.4	3 069.2	
December Quarter	3 590.0	4 359.1	1 589.4	158.1	459.2	3 319.2	4 264.0	1 086.4	251.6	9 538.6	
AVERAGE LENGTH OF STAY (days)											
2002											
December Quarter	2.3	1.8	3.7	1.7	1.8	2.0	2.5	2.5	2.6	2.3	
2003											
October	2.3	1.8	3.5	1.5	1.8	2.0	2.5	2.6	2.3	2.3	
November	2.3	1.8	3.5	1.5	1.8	2.1	2.5	2.6	2.3	2.3	
December	2.3	1.8	3.7	1.4	1.8	2.1	2.5	2.5	2.4	2.3	
December Quarter	2.3	1.8	3.6	1.5	1.8	2.0	2.5	2.6	2.3	2.3	
TAKINGS FROM ACCOMMODATION (a) (\$'000)											
2002											
December Quarter	668 532	376 270	269 252	4 869	36 515	322 857	572 060	311 602	66 149	1 314 053	
2003											
October	252 984	147 884	113 355	2 587	11 729	115 643	254 100	118 558	11 607	514 224	
November	279 929	137 859	111 748	2 456	10 482	108 997	261 258	134 878	11 465	529 537	
December	226 690	121 651	107 244	2 459	9 964	99 689	226 104	106 833	10 536	455 584	
December Quarter	759 603	407 394	332 348	7 502	32 174	324 329	741 462	360 269	33 608	1 499 344	
AVERAGE TAKINGS PER ROOM NIGHT OCCUPIED (\$)											
2002											
December Quarter	140.2	90.2	123.8	61.0	67.4	90.1	124.5	189.4	98.5	118.2	
2003											
October	147.3	92.0	128.2	58.6	69.7	88.7	127.1	206.3	96.5	122.2	
November	161.2	93.4	131.6	60.0	69.0	90.1	133.7	228.5	100.4	130.4	
December	147.1	93.8	135.5	60.6	71.7	91.7	129.5	208.1	101.3	125.5	
December Quarter	152.0	93.0	131.6	59.7	70.1	90.1	130.1	214.7	99.3	126.0	
AVERAGE TAKINGS PER AVAILABLE ROOM NIGHT (\$)											
2002											
December Quarter	94.2	49.0	82.8	23.6	30.2	50.8	85.8	138.2	49.7	72.9	
2003											
October	104.6	56.0	90.8	34.0	33.1	54.7	92.2	157.4	45.7	81.5	
November	119.5	54.0	92.4	30.4	30.5	53.3	97.9	185.1	47.6	86.7	
December	93.1	46.1	85.8	29.3	28.2	47.2	81.6	141.9	42.2	72.0	
December Quarter	105.5	52.0	89.6	31.1	30.6	51.7	90.5	161.2	45.1	80.0	

(a) Break in time series between the March and June quarters 2003. See Appendix 1 for details.

Period	Licensed hotels with facilities	Motels and guest houses	Serviced apartments	STAR GRADING						Ungraded	Total
				1	2	3	4	5			
ESTABLISHMENTS, CAPACITY AND EMPLOYMENT (a) (no.)											
December Quarter 2002											
Establishments	198	979	130	32	179	691	232	25	148	1 307	
Guest rooms	23 855	32 109	7 419	1 236	5 421	24 510	20 821	6 609	4 786	63 383	
Bed spaces	58 854	94 446	23 320	4 400	15 780	70 863	56 143	15 065	14 369	176 620	
Persons employed	18 573	11 207	2 813	299	1 895	8 328	11 209	9 202	1 660	32 593	
December Quarter 2003											
Establishments	201	992	157	35	136	733	338	29	79	1 350	
Guest rooms	23 202	32 657	8 351	1 592	4 078	24 451	24 455	7 160	2 474	64 210	
Bed spaces	55 998	94 761	26 266	5 474	11 813	70 632	66 225	16 137	6 744	177 025	
Persons employed	18 716	10 895	2 899	231	1 635	7 698	12 866	9 193	887	32 510	
ROOM NIGHTS OCCUPIED (a) ('000)											
2002											
December Quarter	1 519.1	1 602.7	472.6	38.0	234.1	1 303.9	1 361.4	463.2	193.8	3 594.4	
2003											
October	509.6	612.8	180.7	24.0	63.8	464.7	555.3	162.7	32.5	1 303.1	
November	552.4	555.6	187.4	22.3	56.9	431.3	569.1	184.2	31.7	1 295.4	
December	511.8	515.0	177.8	23.3	56.3	401.6	529.0	165.6	28.7	1 204.6	
December Quarter	1 573.8	1 683.4	545.9	69.6	177.0	1 297.6	1 653.3	512.6	92.9	3 803.1	
ROOM OCCUPANCY RATE (%)											
2002											
December Quarter	70.3	54.3	69.4	33.4	47.8	58.0	71.9	76.2	44.1	62.1	
2003											
October	71.6	60.8	70.0	57.7	51.2	61.4	73.4	73.3	42.9	65.9	
November	79.4	57.0	75.0	46.7	46.7	58.9	77.7	85.8	44.2	67.4	
December	71.2	51.1	68.8	47.3	44.7	53.2	69.8	74.6	38.2	60.7	
December Quarter	74.0	56.3	71.2	50.2	47.5	57.8	73.6	77.8	41.7	64.6	
GUEST NIGHTS (a) ('000)											
2002											
December Quarter	2 517.3	2 891.4	981.5	59.3	426.4	2 385.8	2 414.7	750.1	354.2	6 390.3	
2003											
October	794.9	1 112.3	367.0	44.5	121.2	855.7	950.3	247.0	55.6	2 274.3	
November	853.8	963.5	371.2	41.6	101.9	759.0	947.7	280.6	57.6	2 188.5	
December	889.6	986.4	422.1	44.4	110.5	787.8	1 011.9	288.5	55.0	2 298.1	
December Quarter	2 538.4	3 062.2	1 160.3	130.5	333.6	2 402.4	2 910.0	816.1	168.2	6 760.9	
BED OCCUPANCY RATE (%)											
2002											
December Quarter	47.1	33.3	45.8	14.6	29.9	36.7	47.2	54.1	26.8	39.5	
2003											
October	47.0	38.0	45.2	35.4	33.6	39.1	46.4	49.4	26.9	41.9	
November	50.9	34.0	47.2	25.3	28.9	35.9	47.8	58.0	29.4	41.3	
December	51.3	33.8	51.9	26.2	30.3	36.1	49.3	57.7	26.8	42.0	
December Quarter	49.7	35.3	48.1	28.4	31.0	37.1	47.9	55.0	27.7	41.8	

(a) Break in time series between the March and June quarters 2003. See Appendix 1 for details.

Period	Licensed hotels with facilities	Motels and guest houses	Serviced apartments	STAR GRADING						Total
				1	2	3	4	5	Ungraded	
GUEST ARRIVALS (a) ('000)										
2002										
December Quarter	1 051.2	1 777.4	296.6	35.3	259.3	1 330.5	1 002.8	329.0	168.3	3 125.2
2003										
October	349.7	685.0	122.5	29.1	71.8	489.0	433.0	108.0	26.2	1 157.1
November	363.3	584.6	121.9	27.3	59.6	417.3	423.8	113.5	28.2	1 069.8
December	372.2	603.1	127.6	28.9	61.3	436.3	431.1	120.7	24.6	1 102.9
December Quarter	1 085.2	1 872.6	372.0	85.4	192.7	1 342.6	1 288.0	342.1	78.9	3 329.8
AVERAGE LENGTH OF STAY (days)										
2002										
December Quarter	2.4	1.6	3.3	1.7	1.6	1.8	2.4	2.3	2.1	2.0
2003										
October	2.3	1.6	3.0	1.5	1.7	1.7	2.2	2.3	2.1	2.0
November	2.4	1.6	3.0	1.5	1.7	1.8	2.2	2.5	2.0	2.0
December	2.4	1.6	3.3	1.5	1.8	1.8	2.3	2.4	2.2	2.1
December Quarter	2.3	1.6	3.1	1.5	1.7	1.8	2.3	2.4	2.1	2.0
TAKINGS FROM ACCOMMODATION (a) (\$'000)										
2002										
December Quarter	228 290	146 987	67 302	2 480	15 866	119 156	185 433	101 204	18 440	442 579
2003										
October	81 677	56 748	26 285	1 378	4 780	41 891	75 887	37 510	3 263	164 710
November	111 457	53 473	31 992	1 361	4 402	41 587	91 240	54 427	3 905	196 922
December	86 449	49 686	28 672	1 417	4 389	38 551	76 196	40 977	3 277	164 808
December Quarter	279 584	159 906	86 949	4 156	13 571	122 030	243 324	132 913	10 445	526 439
AVERAGE TAKINGS PER ROOM NIGHT OCCUPIED (\$)										
2002										
December Quarter	150.3	91.7	142.4	65.2	67.8	91.4	136.2	218.5	95.2	123.1
2003										
October	160.3	92.6	145.4	57.4	74.9	90.1	136.7	230.5	100.3	126.4
November	201.8	96.2	170.7	61.1	77.4	96.4	160.3	295.4	123.1	152.0
December	168.9	96.5	161.3	60.7	78.0	96.0	144.0	247.4	114.4	136.8
December Quarter	177.7	95.0	159.3	59.7	76.7	94.0	147.2	259.3	112.4	138.4
AVERAGE TAKINGS PER AVAILABLE ROOM NIGHT (\$)										
2002										
December Quarter	105.6	49.8	98.8	21.8	32.4	53.0	98.0	166.4	41.9	76.4
2003										
October	114.8	56.3	101.8	33.1	38.3	55.4	100.3	169.0	43.0	83.3
November	160.3	54.8	128.0	28.5	36.1	56.8	124.6	253.4	54.4	102.5
December	120.3	49.3	110.9	28.7	34.8	51.0	100.6	184.6	43.7	83.0
December Quarter	131.5	53.4	113.4	29.9	36.4	54.4	108.3	201.8	46.9	89.5

(a) Break in time series between the March and June quarters 2003. See Appendix 1 for details.

Period	Licensed hotels with facilities	Motels and guest houses	Serviced apartments	STAR GRADING						Ungraded	Total
				1	2	3	4	5			
ESTABLISHMENTS, CAPACITY AND EMPLOYMENT (a) (no.)											
December Quarter 2002											
Establishments	130	495	89	8	65	371	205	21	44	714	
Guest rooms	12 488	15 597	5 098	313	1 733	11 800	13 090	4 214	2 033	33 183	
Bed spaces	29 796	45 068	15 335	907	5 313	33 557	34 937	9 408	6 077	90 199	
Persons employed	14 072	5 384	1 752	99	705	3 948	6 439	8 952	1 065	21 208	
December Quarter 2003											
Establishments	136	502	108	5	50	353	293	22	23	746	
Guest rooms	13 649	16 065	5 754	292	1 399	11 679	16 748	4 542	808	35 468	
Bed spaces	31 168	46 084	18 075	892	4 249	32 318	45 680	9 702	2 486	95 327	
Persons employed	14 464	5 459	1 703	59	610	3 749	7 595	9 126	487	21 626	
ROOM NIGHTS OCCUPIED (a) ('000)											
2002											
December Quarter	779.7	719.6	328.4	15.4	54.7	554.0	798.1	292.5	113.0	1 827.8	
2003											
October	284.1	276.5	121.6	6.6	15.0	203.5	334.2	111.6	11.3	682.2	
November	314.2	270.5	131.8	6.8	16.0	202.2	358.0	121.1	12.6	716.5	
December	251.1	215.2	110.2	6.3	14.3	163.9	286.6	94.9	10.7	576.6	
December Quarter	849.4	762.2	363.6	19.7	45.2	569.5	978.7	327.6	34.5	1 975.2	
ROOM OCCUPANCY RATE (%)											
2002											
December Quarter	67.9	50.2	70.0	53.5	34.3	51.0	66.3	75.4	60.4	59.9	
2003											
October	69.5	55.7	68.8	73.0	34.6	56.3	66.5	79.3	45.0	63.0	
November	79.4	56.3	76.3	77.2	38.0	57.9	73.4	88.8	51.9	68.3	
December	59.3	43.4	61.8	69.9	32.9	45.4	55.3	67.4	42.6	52.5	
December Quarter	69.2	51.7	68.9	73.3	35.1	53.2	64.9	78.4	46.4	61.2	
GUEST NIGHTS (a) ('000)											
2002											
December Quarter	1 200.5	1 257.0	633.3	27.8	100.4	985.6	1 344.1	426.5	206.4	3 090.8	
2003											
October	425.5	476.2	229.3	11.9	27.1	361.0	556.0	155.9	19.0	1 131.0	
November	475.8	460.5	257.2	12.2	28.7	353.3	602.7	173.8	22.8	1 193.5	
December	408.5	394.8	232.0	11.9	27.2	305.0	523.8	147.7	19.7	1 035.2	
December Quarter	1 309.8	1 331.4	718.5	36.0	83.0	1 019.3	1 682.4	477.4	61.5	3 359.7	
BED OCCUPANCY RATE (%)											
2002											
December Quarter	43.8	30.3	44.9	33.4	20.5	31.9	41.8	49.3	36.9	37.2	
2003											
October	45.2	33.4	41.3	43.2	20.6	36.1	40.1	51.8	24.7	38.7	
November	52.2	33.4	47.4	45.4	22.6	36.6	44.8	59.7	30.5	42.2	
December	42.3	27.7	41.4	43.0	20.7	30.6	37.0	49.1	25.6	35.1	
December Quarter	46.5	31.5	43.3	43.8	21.2	34.4	40.6	53.5	26.9	38.6	

(a) Break in time series between the March and June quarters 2003. See Appendix 1 for details.

Period	Licensed hotels with facilities	Motels and guest houses	Serviced apartments	STAR GRADING						Ungraded	Total
				1	2	3	4	5			
GUEST ARRIVALS (a) ('000)											
2002											
December Quarter	572.1	742.2	185.2	21.9	61.7	518.8	650.1	186.4	60.7	1 499.5	
2003											
October	198.5	278.1	69.4	10.1	15.5	190.5	254.1	68.4	7.5	546.0	
November	208.3	261.8	70.1	10.0	15.2	176.2	261.7	68.8	8.3	540.1	
December	194.6	231.8	66.5	10.3	14.3	158.4	237.7	64.5	7.7	492.9	
December Quarter	601.4	771.7	206.0	30.3	44.9	525.1	753.5	201.8	23.5	1 579.1	
AVERAGE LENGTH OF STAY (days)											
2002											
December Quarter	2.1	1.7	3.4	1.3	1.6	1.9	2.1	2.3	3.4	2.1	
2003											
October	2.1	1.7	3.3	1.2	1.7	1.9	2.2	2.3	2.5	2.1	
November	2.3	1.8	3.7	1.2	1.9	2.0	2.3	2.5	2.8	2.2	
December	2.1	1.7	3.5	1.2	1.9	1.9	2.2	2.3	2.5	2.1	
December Quarter	2.2	1.7	3.5	1.2	1.8	1.9	2.2	2.4	2.6	2.1	
TAKINGS FROM ACCOMMODATION (a) (\$'000)											
2002											
December Quarter	117 245	68 109	47 406	904	3 927	49 667	103 273	60 006	14 985	232 761	
2003											
October	43 538	26 214	17 352	377	954	17 876	43 651	22 720	1 528	87 104	
November	53 467	26 232	20 511	391	1 019	18 523	50 567	27 918	1 792	100 210	
December	35 310	20 874	15 042	353	916	14 656	36 014	17 920	1 366	71 225	
December Quarter	132 315	73 320	52 905	1 121	2 889	51 054	130 232	68 558	4 686	258 540	
AVERAGE TAKINGS PER ROOM NIGHT OCCUPIED (\$)											
2002											
December Quarter	150.4	94.6	144.3	58.7	71.8	89.6	129.4	205.2	132.6	127.3	
2003											
October	153.3	94.8	142.7	57.0	63.6	87.9	130.6	203.5	135.6	127.7	
November	170.2	97.0	155.7	57.9	63.8	91.6	141.3	230.6	142.5	139.9	
December	140.6	97.0	136.4	55.8	64.3	89.4	125.7	188.8	128.1	123.5	
December Quarter	155.8	96.2	145.5	56.9	63.9	89.6	133.1	209.3	135.8	130.9	
AVERAGE TAKINGS PER AVAILABLE ROOM NIGHT (\$)											
2002											
December Quarter	102.1	47.5	101.1	31.4	24.6	45.8	85.8	154.8	80.1	76.3	
2003											
October	106.5	52.8	98.1	41.6	22.0	49.5	86.8	161.4	61.0	80.5	
November	135.2	54.6	118.8	44.7	24.3	53.0	103.6	204.9	73.9	95.6	
December	83.5	42.1	84.3	39.0	21.1	40.6	69.5	127.3	54.5	64.9	
December Quarter	107.8	49.8	100.2	41.7	22.4	47.7	86.3	164.1	63.0	80.1	

(a) Break in time series between the March and June quarters 2003. See Appendix 1 for details.

Period	Licensed hotels with facilities	Motels and guest houses	Serviced apartments	STAR GRADING						Ungraded	Total
				1	2	3	4	5			
ESTABLISHMENTS, CAPACITY AND EMPLOYMENT (a) (no.)											
December Quarter 2002											
Establishments	168	508	287	9	93	412	316	37	96	963	
Guest rooms	20 639	18 209	13 582	282	2 439	14 703	22 993	8 517	3 496	52 430	
Bed spaces	61 978	53 444	46 332	768	7 305	46 129	70 795	26 343	10 414	161 754	
Persons employed	21 010	6 424	4 489	91	1 005	5 753	11 467	12 217	1 390	31 923	
December Quarter 2003											
Establishments	172	516	328	12	81	410	414	43	56	1 016	
Guest rooms	20 591	18 541	16 069	332	2 088	15 083	28 691	7 169	1 838	55 201	
Bed spaces	61 764	54 349	53 052	884	6 113	47 181	89 237	20 665	5 085	169 165	
Persons employed	20 636	6 506	5 066	101	1 038	5 242	13 454	11 625	748	32 208	
ROOM NIGHTS OCCUPIED (a) ('000)											
2002											
December Quarter	1 287.8	982.3	835.4	14.0	110.0	799.8	1 440.9	544.8	196.1	3 105.5	
2003											
October	472.3	384.4	360.8	6.2	33.3	321.2	660.2	165.4	31.2	1 217.4	
November	456.1	354.8	329.3	5.5	30.1	296.1	617.4	161.8	29.4	1 140.3	
December	420.5	317.9	321.8	5.1	28.0	278.1	575.5	145.2	28.4	1 060.3	
December Quarter	1 349.0	1 057.1	1 011.9	16.8	91.4	895.4	1 853.1	472.4	89.0	3 417.9	
ROOM OCCUPANCY RATE (%)											
2002											
December Quarter	67.8	58.6	66.9	54.1	49.0	59.1	68.1	69.5	61.0	64.4	
2003											
October	74.0	66.9	72.4	60.6	51.4	68.7	74.2	74.4	54.7	71.1	
November	73.8	63.8	68.3	55.7	48.0	65.4	71.7	75.2	53.4	68.9	
December	65.9	55.3	64.7	49.2	43.3	59.5	64.8	65.3	49.8	62.0	
December Quarter	71.2	62.0	68.5	55.1	47.6	64.5	70.2	71.6	52.6	67.3	
GUEST NIGHTS (a) ('000)											
2002											
December Quarter	2 449.7	1 756.9	2 057.6	23.6	199.8	1 612.6	2 976.1	1 040.6	411.6	6 264.2	
2003											
October	885.5	679.7	896.8	12.6	59.5	655.0	1 372.2	307.7	55.1	2 462.1	
November	829.8	613.4	786.6	10.4	50.8	590.5	1 236.1	289.9	52.0	2 229.8	
December	849.4	609.6	870.9	9.4	53.0	609.2	1 312.4	292.2	53.6	2 329.9	
December Quarter	2 564.7	1 902.7	2 554.3	32.4	163.3	1 854.8	3 920.8	889.8	160.7	7 021.7	
BED OCCUPANCY RATE (%)											
2002											
December Quarter	43.0	35.7	48.3	33.4	29.7	38.0	45.7	42.9	43.0	42.1	
2003											
October	46.2	40.3	54.5	46.0	31.4	44.8	49.6	48.0	34.9	46.9	
November	44.8	37.6	49.4	39.4	27.7	41.7	46.2	46.8	34.1	43.9	
December	44.4	36.2	53.1	34.2	28.0	41.7	47.5	45.6	34.0	44.5	
December Quarter	45.1	38.1	52.4	39.9	29.0	42.7	47.8	46.8	34.3	45.1	

(a) Break in time series between the March and June quarters 2003. See Appendix 1 for details.

Period	Licensed hotels with facilities	Motels and guest houses	Serviced apartments	STAR GRADING						Ungraded	Total
				1	2	3	4	5			
GUEST ARRIVALS (a) ('000)											
2002											
December Quarter	904.2	844.3	484.8	10.2	96.2	657.0	968.5	371.8	129.6	2 233.3	
2003											
October	325.6	326.4	212.1	7.7	32.9	252.0	445.8	103.1	22.5	864.1	
November	319.8	295.3	197.6	6.8	29.2	229.5	423.3	102.3	21.6	812.6	
December	320.1	296.3	196.5	7.1	29.1	229.2	424.6	101.2	21.6	812.9	
December Quarter	965.4	918.0	606.2	21.6	91.2	710.7	1 293.7	306.7	65.8	2 489.6	
AVERAGE LENGTH OF STAY (days)											
2002											
December Quarter	2.7	2.1	4.2	2.3	2.1	2.5	3.1	2.8	3.2	2.8	
2003											
October	2.7	2.1	4.2	1.6	1.8	2.6	3.1	3.0	2.4	2.8	
November	2.6	2.1	4.0	1.5	1.7	2.6	2.9	2.8	2.4	2.7	
December	2.7	2.1	4.4	1.3	1.8	2.7	3.1	2.9	2.5	2.9	
December Quarter	2.7	2.1	4.2	1.5	1.8	2.6	3.0	2.9	2.4	2.8	
TAKINGS FROM ACCOMMODATION (a) (\$'000)											
2002											
December Quarter	184 554	83 446	93 238	813	7 153	70 984	164 775	98 172	19 341	361 238	
2003											
October	71 067	34 291	42 067	402	2 241	28 497	79 424	33 967	2 894	147 426	
November	66 180	31 500	35 851	333	2 003	25 267	70 575	32 772	2 581	133 531	
December	62 730	28 346	40 874	338	2 084	25 297	70 571	30 837	2 824	131 951	
December Quarter	199 977	94 138	118 793	1 073	6 328	79 061	220 570	97 576	8 300	412 907	
AVERAGE TAKINGS PER ROOM NIGHT OCCUPIED (\$)											
2002											
December Quarter	143.3	84.9	111.6	57.9	65.0	88.7	114.4	180.2	98.6	116.3	
2003											
October	150.5	89.2	116.6	64.5	67.4	88.7	120.3	205.4	92.9	121.1	
November	145.1	88.8	108.9	60.1	66.6	85.3	114.3	202.6	87.7	117.1	
December	149.2	89.2	127.0	66.8	74.3	91.0	122.6	212.3	99.6	124.5	
December Quarter	148.2	89.1	117.4	63.7	69.3	88.3	119.0	206.6	93.3	120.8	
AVERAGE TAKINGS PER AVAILABLE ROOM NIGHT (\$)											
2002											
December Quarter	97.2	49.8	74.6	31.3	31.9	52.5	77.9	125.3	60.1	74.9	
2003											
October	111.3	59.7	84.4	39.1	34.6	60.9	89.3	152.8	50.8	86.2	
November	107.1	56.6	74.4	33.4	32.0	55.8	82.0	152.4	46.8	80.6	
December	98.3	49.3	82.2	32.8	32.2	54.1	79.4	138.8	49.6	77.2	
December Quarter	105.6	55.2	80.4	35.1	32.9	57.0	83.6	147.9	49.1	81.3	

(a) Break in time series between the March and June quarters 2003. See Appendix 1 for details.

Period	Licensed hotels with facilities	Motels and guest houses	Serviced apartments	STAR GRADING						Ungraded	Total
				1	2	3	4	5			
ESTABLISHMENTS, CAPACITY AND EMPLOYMENT (a) (no.)											
December Quarter 2002											
Establishments	62	145	31	5	51	113	51	7	11	238	
Guest rooms	4 362	5 232	1 435	126	1 491	4 150	3 354	1 650	258	11 029	
Bed spaces	10 729	15 372	4 906	301	4 055	12 283	10 134	3 482	752	31 007	
Persons employed	4 156	2 094	495	83	826	2 184	2 088	1 423	141	6 745	
December Quarter 2003											
Establishments	66	146	34	7	44	114	65	9	7	246	
Guest rooms	4 766	5 272	1 606	158	1 629	3 633	4 027	2 027	170	11 644	
Bed spaces	11 248	15 537	5 565	453	4 169	10 747	11 954	4 558	469	32 350	
Persons employed	4 076	2 275	587	81	907	1 663	2 734	1 425	128	6 938	
ROOM NIGHTS OCCUPIED (a) ('000)											
2002											
December Quarter	259.9	267.7	92.8	2.9	56.2	223.3	207.9	117.5	12.5	620.5	
2003											
October	98.6	103.1	37.1	1.6	22.2	70.1	89.0	52.6	3.2	238.7	
November	86.8	89.9	33.6	1.4	18.5	60.3	80.8	46.7	2.5	210.2	
December	75.3	78.1	30.6	1.4	16.4	52.9	71.1	40.0	2.2	184.1	
December Quarter	260.6	271.1	101.3	4.4	57.1	183.3	240.9	139.3	7.9	633.0	
ROOM OCCUPANCY RATE (%)											
2002											
December Quarter	64.8	55.6	70.3	24.8	41.0	58.5	67.4	77.4	52.9	61.1	
2003											
October	66.7	63.3	74.4	34.0	43.9	62.6	71.3	83.7	60.7	66.3	
November	60.9	57.1	69.6	32.6	37.9	55.6	66.9	76.8	49.2	60.3	
December	51.0	48.0	61.5	28.2	32.9	47.0	56.9	63.7	41.9	51.1	
December Quarter	59.5	56.1	68.5	31.6	38.3	55.0	65.0	74.7	50.6	59.2	
GUEST NIGHTS (a) ('000)											
2002											
December Quarter	392.7	458.7	181.8	4.6	96.4	389.2	354.9	162.5	25.5	1 033.2	
2003											
October	144.3	177.7	72.9	2.6	36.3	126.8	151.8	72.0	5.3	394.9	
November	125.0	146.1	62.7	2.2	30.1	102.4	131.0	64.4	3.9	333.8	
December	118.0	141.6	64.2	2.4	28.3	99.9	129.9	59.2	4.0	323.7	
December Quarter	387.3	465.4	199.7	7.2	94.8	329.1	412.7	195.6	13.1	1 052.5	
BED OCCUPANCY RATE (%)											
2002											
December Quarter	39.8	32.4	40.3	16.7	25.9	34.4	38.1	50.7	36.8	36.2	
2003											
October	41.4	37.0	42.3	18.9	28.1	38.2	41.0	51.0	36.3	39.4	
November	37.1	31.4	37.5	17.1	24.1	31.9	36.5	47.1	27.4	34.5	
December	33.8	29.6	37.2	16.8	22.4	30.0	35.0	41.9	27.5	32.4	
December Quarter	37.5	32.7	39.0	17.6	24.9	33.4	37.5	46.7	30.4	35.4	

(a) Break in time series between the March and June quarters 2003. See Appendix 1 for details.

Period	Licensed hotels with facilities	Motels and guest houses	Serviced apartments	STAR GRADING						Ungraded	Total
				1	2	3	4	5			
GUEST ARRIVALS (a) ('000)											
2002											
December Quarter	186.1	267.1	51.0	2.3	57.7	217.0	147.0	70.9	9.2	504.2	
2003											
October	69.8	99.4	24.9	1.5	20.5	69.7	66.2	34.0	2.1	194.1	
November	63.4	83.0	20.6	1.3	16.8	56.7	59.1	31.6	1.6	167.0	
December	57.4	80.3	20.7	1.5	16.0	54.6	56.8	27.3	2.1	158.4	
December Quarter	190.6	262.6	66.3	4.4	53.4	181.0	182.0	92.9	5.7	519.5	
AVERAGE LENGTH OF STAY (days)											
2002											
December Quarter	2.1	1.7	3.6	2.0	1.7	1.8	2.4	2.3	2.8	2.0	
2003											
October	2.1	1.8	2.9	1.7	1.8	1.8	2.3	2.1	2.6	2.0	
November	2.0	1.8	3.0	1.7	1.8	1.8	2.2	2.0	2.4	2.0	
December	2.1	1.8	3.1	1.5	1.8	1.8	2.3	2.2	1.9	2.0	
December Quarter	2.0	1.8	3.0	1.6	1.8	1.8	2.3	2.1	2.3	2.0	
TAKINGS FROM ACCOMMODATION (a) (\$'000)											
2002											
December Quarter	31 051	23 423	10 424	135	3 479	18 627	24 080	17 572	1 005	64 898	
2003											
October	12 549	9 440	4 463	108	1 392	5 759	10 544	8 360	290	26 453	
November	10 613	7 965	3 705	89	1 130	4 821	9 163	6 861	220	22 283	
December	9 010	7 047	3 465	90	1 048	4 405	8 121	5 658	199	19 522	
December Quarter	32 173	24 452	11 633	287	3 570	14 985	27 829	20 879	709	68 258	
AVERAGE TAKINGS PER ROOM NIGHT OCCUPIED (\$)											
2002											
December Quarter	119.4	87.5	112.3	47.0	61.8	83.4	115.8	149.5	80.1	104.6	
2003											
October	127.3	91.6	120.4	65.7	62.8	82.2	118.4	158.9	90.6	110.8	
November	122.3	88.6	110.4	62.9	61.0	80.0	113.4	147.0	87.7	106.0	
December	119.7	90.2	113.1	65.1	63.7	83.2	114.3	141.3	90.4	106.0	
December Quarter	123.4	90.2	114.9	64.6	62.5	81.8	115.5	149.9	89.6	107.8	
AVERAGE TAKINGS PER AVAILABLE ROOM NIGHT (\$)											
2002											
December Quarter	77.4	48.7	79.0	11.7	25.4	48.8	78.0	115.8	42.4	64.0	
2003											
October	85.0	58.0	89.6	22.3	27.6	51.4	84.5	133.0	55.0	73.4	
November	74.4	50.6	76.9	20.5	23.1	44.5	75.8	112.8	43.1	64.0	
December	61.0	43.3	69.6	18.4	21.0	39.1	65.1	90.0	37.8	54.2	
December Quarter	73.5	50.6	78.7	20.4	23.9	45.0	75.1	112.0	45.3	63.9	

(a) Break in time series between the March and June quarters 2003. See Appendix 1 for details.

Period	Licensed hotels with facilities	Motels and guest houses	Serviced apartments	STAR GRADING						Ungraded	Total
				1	2	3	4	5			
ESTABLISHMENTS, CAPACITY AND EMPLOYMENT (a) (no.)											
December Quarter 2002											
Establishments	128	126	71	2	21	131	76	15	80	325	
Guest rooms	9 438	5 579	4 165	np	np	7 287	5 917	2 724	2 547	19 182	
Bed spaces	24 108	15 105	14 005	np	np	19 991	17 315	7 656	6 467	53 218	
Persons employed	6 483	1 708	1 562	np	np	2 739	3 023	2 367	1 272	9 753	
December Quarter 2003											
Establishments	128	130	85	2	21	134	107	17	62	343	
Guest rooms	9 510	6 145	4 836	np	np	7 371	7 420	2 799	2 233	20 491	
Bed spaces	23 959	15 764	16 159	np	np	19 635	21 800	7 685	5 282	55 882	
Persons employed	6 379	1 716	1 849	np	np	2 567	3 611	2 432	1 082	9 944	
ROOM NIGHTS OCCUPIED (a) ('000)											
2002											
December Quarter	549.4	259.7	235.5	np	np	364.1	373.0	183.7	93.3	1 044.6	
2003											
October	205.9	102.4	102.9	np	np	132.9	168.0	68.8	31.8	411.2	
November	187.5	88.1	91.3	np	np	115.0	152.1	63.3	27.8	366.9	
December	166.8	82.6	87.4	np	np	107.6	138.8	56.7	25.6	336.7	
December Quarter	560.2	273.0	281.5	np	np	355.5	459.0	188.7	85.2	1 114.8	
ROOM OCCUPANCY RATE (%)											
2002											
December Quarter	63.6	50.6	61.5	np	np	54.3	68.6	73.3	40.5	59.3	
2003											
October	69.8	53.7	68.6	np	np	58.2	73.0	79.2	45.9	64.7	
November	66.5	47.8	62.9	np	np	52.0	68.3	75.3	43.6	60.0	
December	57.2	43.3	58.3	np	np	47.1	60.4	65.3	38.8	53.3	
December Quarter	64.5	48.3	63.3	np	np	52.4	67.2	73.3	42.8	59.3	
GUEST NIGHTS (a) ('000)											
2002											
December Quarter	839.8	434.9	531.5	np	np	627.3	662.5	315.0	153.1	1 806.2	
2003											
October	310.8	167.0	224.9	np	np	219.2	302.4	119.6	47.5	702.7	
November	277.9	139.0	192.3	np	np	185.2	262.1	108.8	41.2	609.2	
December	278.2	143.3	208.7	np	np	188.8	277.4	110.3	42.1	630.2	
December Quarter	866.9	449.3	625.9	np	np	593.2	841.9	338.7	130.9	1 942.1	
BED OCCUPANCY RATE (%)											
2002											
December Quarter	38.1	31.3	41.3	np	np	34.1	41.6	44.7	26.3	37.0	
2003											
October	41.8	34.2	44.9	np	np	36.0	44.8	50.2	29.0	40.6	
November	39.2	29.4	39.7	np	np	31.4	40.1	47.2	27.8	36.6	
December	38.0	29.3	41.7	np	np	31.0	41.0	46.3	27.5	36.6	
December Quarter	39.7	31.0	42.1	np	np	32.8	42.0	47.9	28.1	37.9	

np not available for publication but included in totals where applicable, unless otherwise indicated

(a) Break in time series between the March and June quarters 2003. See Appendix 1 for details.

Period	Licensed hotels with facilities	Motels and guest houses	Serviced apartments	STAR GRADING						Total
				1	2	3	4	5	Ungraded	
GUEST ARRIVALS (a) ('000)										
2002										
December Quarter	387.0	212.0	150.6	np	np	283.6	259.0	114.9	68.0	749.5
2003										
October	143.9	76.8	64.4	np	np	98.1	124.1	37.6	19.6	285.1
November	129.8	64.1	54.7	np	np	81.7	107.3	37.6	16.9	248.6
December	130.8	66.7	56.4	np	np	83.9	110.8	37.9	16.3	254.0
December Quarter	404.5	207.7	175.6	np	np	263.7	342.3	113.0	52.8	787.7
AVERAGE LENGTH OF STAY (days)										
2002										
December Quarter	2.2	2.1	3.5	np	np	2.2	2.6	2.7	2.3	2.4
2003										
October	2.2	2.2	3.5	np	np	2.2	2.4	3.2	2.4	2.5
November	2.1	2.2	3.5	np	np	2.3	2.4	2.9	2.4	2.5
December	2.1	2.1	3.7	np	np	2.3	2.5	2.9	2.6	2.5
December Quarter	2.1	2.2	3.6	np	np	2.2	2.5	3.0	2.5	2.5
TAKINGS FROM ACCOMMODATION (a) (\$'000)										
2002										
December Quarter	62 711	21 684	27 006	np	np	30 592	43 397	28 101	6 995	111 402
2003										
October	26 137	8 605	12 625	np	np	11 125	20 293	12 693	2 692	47 367
November	21 526	7 277	10 125	np	np	9 153	17 508	9 670	2 108	38 928
December	19 459	7 011	10 917	np	np	9 045	16 682	9 081	2 105	37 386
December Quarter	67 122	22 893	33 667	np	np	29 323	54 484	31 443	6 904	123 681
AVERAGE TAKINGS PER ROOM NIGHT OCCUPIED (\$)										
2002										
December Quarter	114.1	83.5	114.7	np	np	84.0	116.3	153.0	75.0	106.6
2003										
October	126.9	84.1	122.7	np	np	83.7	120.8	184.6	84.7	115.2
November	114.8	82.6	110.9	np	np	79.6	115.1	152.9	75.8	106.1
December	116.7	84.9	125.0	np	np	84.1	120.2	160.2	82.2	111.0
December Quarter	119.8	83.9	119.6	np	np	82.5	118.7	166.6	81.0	110.9
AVERAGE TAKINGS PER AVAILABLE ROOM NIGHT (\$)										
2002										
December Quarter	72.5	42.3	70.5	np	np	45.6	79.8	112.1	30.3	63.3
2003										
October	88.7	45.2	84.2	np	np	48.7	88.2	146.3	38.9	74.6
November	76.3	39.5	69.8	np	np	41.4	78.7	115.2	33.0	63.7
December	66.7	36.8	72.8	np	np	39.6	72.5	104.7	31.9	59.2
December Quarter	77.3	40.5	75.7	np	np	43.2	79.8	122.1	34.7	65.8

np not available for publication but included in totals where applicable, unless otherwise indicated

(a) Break in time series between the March and June quarters 2003. See Appendix 1 for details.

Period	Licensed hotels with facilities	Motels and guest houses	Serviced apartments	STAR GRADING						Total
				1	2	3	4	5	Ungraded	
ESTABLISHMENTS, CAPACITY AND EMPLOYMENT (a) (no.)										
December Quarter 2002										
Establishments	54	55	31	1	13	75	36	—	15	140
Guest rooms	2 867	1 801	1 129	np	np	2 748	2 210	—	414	5 797
Bed spaces	7 831	5 444	3 895	np	np	8 306	6 357	—	1 347	17 170
Persons employed	2 558	1 019	552	np	np	1 473	2 179	—	256	4 129
December Quarter 2003										
Establishments	54	57	32	1	15	71	46	—	10	143
Guest rooms	2 940	1 926	1 164	np	536	2 566	2 656	—	np	6 030
Bed spaces	8 199	5 633	4 005	np	1 465	7 714	7 798	—	np	17 837
Persons employed	2 563	1 076	605	np	222	1 502	2 286	—	np	4 244
ROOM NIGHTS OCCUPIED (a) ('000)										
2002										
December Quarter	151.4	93.6	70.7	np	np	136.2	148.7	—	15.7	315.7
2003										
October	55.6	34.8	23.8	np	6.1	45.6	59.2	—	np	114.2
November	58.1	37.1	25.5	np	7.1	48.5	61.4	—	np	120.7
December	52.3	31.3	24.3	np	5.5	42.8	56.4	—	np	108.0
December Quarter	166.0	103.2	73.6	np	18.7	136.9	177.0	—	np	342.8
ROOM OCCUPANCY RATE (%)										
2002										
December Quarter	57.4	56.5	68.1	np	np	53.9	73.1	—	41.2	59.2
2003										
October	61.0	58.2	66.1	np	36.5	57.3	71.9	—	np	61.1
November	65.8	64.3	72.9	np	44.2	62.9	77.1	—	np	66.7
December	57.4	52.4	67.4	np	33.0	53.8	68.5	—	np	57.8
December Quarter	61.4	58.3	68.8	np	37.8	58.0	72.4	—	np	61.8
GUEST NIGHTS (a) ('000)										
2002										
December Quarter	244.3	176.3	145.4	np	np	267.3	237.5	—	35.4	566.1
2003										
October	88.7	64.9	51.4	np	10.0	88.3	99.3	—	np	205.1
November	92.7	67.8	52.7	np	11.7	91.9	102.3	—	np	213.2
December	92.2	64.5	58.5	np	8.6	90.9	107.9	—	np	215.2
December Quarter	273.7	197.2	162.6	np	30.3	271.0	309.5	—	np	633.4
BED OCCUPANCY RATE (%)										
2002										
December Quarter	33.9	35.2	40.6	np	np	35.0	40.6	—	28.6	35.8
2003										
October	34.9	37.2	41.4	np	22.1	36.9	41.1	—	np	37.1
November	37.7	40.1	43.8	np	26.7	39.7	43.7	—	np	39.8
December	36.3	36.9	47.1	np	18.9	38.0	44.6	—	np	38.9
December Quarter	36.3	38.0	44.1	np	22.5	38.2	43.1	—	np	38.6

— nil or rounded to zero (including null cells)

np not available for publication but included in totals where applicable, unless otherwise indicated

(a) Break in time series between the March and June quarters 2003. See Appendix 1 for details.

Period	Licensed hotels with facilities	Motels and guest houses	Serviced apartments	STAR GRADING						Total
				1	2	3	4	5	Ungraded	
GUEST ARRIVALS (a) ('000)										
2002										
December Quarter	136.5	97.0	60.6	np	np	149.8	110.0	—	19.3	294.1
2003										
October	48.4	37.1	22.5	np	5.6	50.4	47.6	—	np	107.9
November	51.2	37.4	24.7	np	6.4	51.8	50.8	—	np	113.3
December	50.0	36.2	26.3	np	5.9	50.9	51.0	—	np	112.4
December Quarter	149.5	110.7	73.4	np	17.9	153.1	149.4	—	np	333.7
AVERAGE LENGTH OF STAY (days)										
2002										
December Quarter	1.8	1.8	2.4	np	np	1.8	2.2	—	1.8	1.9
2003										
October	1.8	1.8	2.3	np	1.8	1.8	2.1	—	np	1.9
November	1.8	1.8	2.1	np	1.8	1.8	2.0	—	np	1.9
December	1.8	1.8	2.2	np	1.5	1.8	2.1	—	np	1.9
December Quarter	1.8	1.8	2.2	np	1.7	1.8	2.1	—	np	1.9
TAKINGS FROM ACCOMMODATION (a) (\$'000)										
2002										
December Quarter	14 468	8 921	7 822	np	np	11 524	17 280	—	1 549	31 211
2003										
October	5 758	3 429	2 913	np	384	4 023	7 365	—	np	12 100
November	6 037	3 683	3 036	np	428	4 362	7 626	—	np	12 756
December	5 686	3 386	3 209	np	359	4 086	7 461	—	np	12 282
December Quarter	17 481	10 498	9 158	np	1 172	12 471	22 452	—	np	37 138
AVERAGE TAKINGS PER ROOM NIGHT OCCUPIED (\$)										
2002										
December Quarter	95.5	95.3	110.6	np	np	84.6	116.2	—	98.8	98.9
2003										
October	103.6	98.6	122.2	np	63.3	88.2	124.3	—	np	106.0
November	104.0	99.2	119.2	np	60.2	90.0	124.2	—	np	105.7
December	108.6	108.1	131.9	np	65.6	95.5	132.3	—	np	113.7
December Quarter	105.3	101.7	124.4	np	62.8	91.1	126.8	—	np	108.3
AVERAGE TAKINGS PER AVAILABLE ROOM NIGHT (\$)										
2002										
December Quarter	54.9	53.8	75.3	np	np	45.6	85.0	—	40.7	58.5
2003										
October	63.2	57.4	80.7	np	23.1	50.6	89.5	—	np	64.7
November	68.4	63.7	87.0	np	26.6	56.7	95.7	—	np	70.5
December	62.4	56.7	88.9	np	21.6	51.4	90.6	—	np	65.7
December Quarter	64.6	59.2	85.5	np	23.8	52.8	91.9	—	np	66.9

— nil or rounded to zero (including null cells)

np not available for publication but included in totals where applicable, unless otherwise indicated

(a) Break in time series between the March and June quarters 2003. See Appendix 1 for details.

Period	Licensed hotels with facilities	Motels and guest houses	Serviced apartments	STAR GRADING						Ungraded	Total
				1	2	3	4	5			
ESTABLISHMENTS, CAPACITY AND EMPLOYMENT (a) (no.)											
December Quarter 2002											
Establishments	23	47	18	5	18	32	13	4	16	88	
Guest rooms	2 012	3 185	1 189	np	745	2 528	1 819	np	558	6 386	
Bed spaces	5 386	9 587	3 918	np	2 275	7 882	5 404	np	1 605	18 891	
Persons employed	1 777	978	341	np	279	915	959	np	230	3 096	
December Quarter 2003											
Establishments	24	46	20	4	17	34	19	3	13	90	
Guest rooms	2 150	2 949	1 317	np	np	2 218	2 645	np	356	6 416	
Bed spaces	5 829	8 784	4 108	np	np	6 718	7 909	np	1 064	18 721	
Persons employed	1 655	838	359	np	np	630	1 161	np	149	2 852	
ROOM NIGHTS OCCUPIED (a) ('000)											
2002											
December Quarter	106.1	151.0	53.0	np	26.5	123.8	104.5	np	21.2	310.0	
2003											
October	43.5	51.9	24.9	1.8	9.9	37.9	58.2	np	np	120.3	
November	35.2	41.4	20.2	1.5	np	29.4	47.0	np	4.6	96.7	
December	27.3	31.5	16.5	np	6.7	22.2	35.7	np	np	75.3	
December Quarter	105.9	124.8	61.5	np	np	89.5	141.0	np	13.6	292.3	
ROOM OCCUPANCY RATE (%)											
2002											
December Quarter	57.3	51.6	48.8	np	38.6	53.5	62.4	np	41.9	52.9	
2003											
October	65.3	56.8	61.0	48.9	44.2	55.1	71.0	np	np	60.5	
November	54.9	46.7	51.0	41.9	np	44.2	59.3	np	42.9	50.4	
December	41.2	34.5	40.3	np	30.0	32.3	43.6	np	np	37.9	
December Quarter	53.8	46.0	50.8	np	np	43.9	57.9	np	41.6	49.6	
GUEST NIGHTS (a) ('000)											
2002											
December Quarter	174.0	249.3	104.7	np	44.9	221.6	171.0	np	40.2	528.0	
2003											
October	67.4	89.4	49.4	3.4	15.5	71.2	94.0	np	np	206.1	
November	53.4	68.8	37.5	2.6	np	52.6	72.9	np	7.9	159.7	
December	43.3	54.5	36.1	np	10.3	44.3	58.8	np	np	133.9	
December Quarter	164.1	212.7	122.9	np	np	168.0	225.7	np	23.0	499.7	
BED OCCUPANCY RATE (%)											
2002											
December Quarter	35.1	28.4	29.3	np	21.4	30.7	34.4	np	27.8	30.5	
2003											
October	37.4	32.8	38.8	32.9	25.3	34.2	38.3	np	np	35.5	
November	30.8	26.1	30.5	25.9	np	26.1	30.7	np	24.7	28.5	
December	24.1	20.0	28.3	np	16.8	21.3	24.0	np	np	23.1	
December Quarter	30.8	26.3	32.5	np	np	27.2	31.0	np	23.5	29.1	

np not available for publication but included in totals where applicable, unless otherwise indicated

(a) Break in time series between the March and June quarters 2003. See Appendix 1 for details.

Period	Licensed hotels with facilities	Motels and guest houses	Serviced apartments	STAR GRADING						Ungraded	Total
				1	2	3	4	5			
GUEST ARRIVALS (a) ('000)											
2002											
December Quarter	103.2	146.1	39.6	np	28.9	135.0	86.8	np	15.4	288.9	
2003											
October	36.3	50.3	19.7	1.2	8.3	36.8	48.4	np	np	106.3	
November	29.6	41.6	15.6	1.0	np	29.8	38.9	np	3.4	86.9	
December	22.9	32.7	14.5	np	5.4	24.6	29.7	np	np	70.1	
December Quarter	88.8	124.6	49.9	np	np	91.2	117.1	np	10.1	263.3	
AVERAGE LENGTH OF STAY (days)											
2002											
December Quarter	1.7	1.7	2.6	np	1.6	1.6	2.0	np	2.6	1.8	
2003											
October	1.9	1.8	2.5	2.7	1.9	1.9	1.9	np	np	1.9	
November	1.8	1.7	2.4	2.5	np	1.8	1.9	np	2.3	1.8	
December	1.9	1.7	2.5	np	1.9	1.8	2.0	np	np	1.9	
December Quarter	1.8	1.7	2.5	np	np	1.8	1.9	np	2.3	1.9	
TAKINGS FROM ACCOMMODATION (a) (\$'000)											
2002											
December Quarter	14 834	15 731	5 618	np	1 828	15 405	13 767	np	1 704	36 183	
2003											
October	5 606	5 513	3 254	122	693	4 019	7 194	np	np	14 373	
November	4 467	4 478	2 527	101	np	3 012	5 756	np	362	11 473	
December	3 321	3 148	2 037	np	386	2 193	4 241	np	np	8 505	
December Quarter	13 394	13 138	7 819	np	np	9 223	17 190	np	1 067	34 351	
AVERAGE TAKINGS PER ROOM NIGHT OCCUPIED (\$)											
2002											
December Quarter	139.8	104.2	106.1	np	69.1	124.4	131.8	np	80.4	116.7	
2003											
October	129.0	106.2	130.6	68.2	69.8	106.0	123.6	np	np	119.5	
November	127.0	108.3	125.4	67.8	np	102.3	122.3	np	79.0	118.7	
December	121.7	99.8	123.7	np	57.3	98.8	118.7	np	np	113.0	
December Quarter	126.5	105.3	127.1	np	np	103.0	121.9	np	78.3	117.5	
AVERAGE TAKINGS PER AVAILABLE ROOM NIGHT (\$)											
2002											
December Quarter	80.1	53.8	51.8	np	26.7	66.5	82.3	np	33.7	61.8	
2003											
October	84.2	60.3	79.7	33.4	30.8	58.4	87.7	np	np	72.3	
November	69.7	50.6	64.0	28.4	np	45.3	72.5	np	33.9	59.7	
December	50.2	34.4	49.9	np	17.2	31.9	51.7	np	np	42.9	
December Quarter	68.1	48.4	64.5	np	np	45.2	70.6	np	32.6	58.3	

np not available for publication but included in totals where applicable, unless otherwise indicated

(a) Break in time series between the March and June quarters 2003. See Appendix 1 for details.

Period	Licensed hotels with facilities	Motels and guest houses	Serviced apartments	STAR GRADING						Ungraded	Total
				1	2	3	4	5			
ESTABLISHMENTS, CAPACITY AND EMPLOYMENT (a) (no.)											
December Quarter 2002											
Establishments	14	27	18	1	6	20	23	1	8	59	
Guest rooms	1 855	1 853	1 333	np	np	1 435	2 560	np	440	5 041	
Bed spaces	4 556	5 690	4 674	np	np	4 514	7 252	np	1 318	14 920	
Persons employed	1 070	657	426	np	np	535	1 090	np	114	2 153	
December Quarter 2003											
Establishments	15	26	17	1	9	16	29	1	2	58	
Guest rooms	1 912	1 835	1 254	np	472	1 316	2 807	np	np	5 001	
Bed spaces	4 797	5 195	3 953	np	1 609	3 791	7 452	np	np	13 945	
Persons employed	1 557	708	421	np	109	536	1 437	np	np	2 686	
ROOM NIGHTS OCCUPIED (a) ('000)											
2002											
December Quarter	116.3	96.4	86.9	np	np	79.0	161.3	np	26.0	299.5	
2003											
October	48.5	41.5	32.6	np	9.9	27.8	74.5	np	np	122.6	
November	46.8	37.9	30.0	np	np	27.0	68.6	np	np	114.7	
December	36.3	25.9	22.6	np	np	17.6	53.5	np	np	84.8	
December Quarter	131.6	105.4	85.3	np	24.0	72.5	196.6	np	np	322.2	
ROOM OCCUPANCY RATE (%)											
2002											
December Quarter	68.1	56.5	70.8	np	np	59.9	68.5	np	64.2	64.6	
2003											
October	81.9	72.9	83.9	np	67.9	68.2	85.6	np	np	79.1	
November	81.5	68.9	79.8	np	np	68.4	81.5	np	np	76.5	
December	61.3	46.9	58.2	np	np	43.2	61.4	np	np	55.3	
December Quarter	74.8	63.0	73.9	np	57.5	59.9	76.1	np	np	70.3	
GUEST NIGHTS (a) ('000)											
2002											
December Quarter	168.5	177.3	168.1	np	np	142.6	260.3	np	52.0	513.8	
2003											
October	72.7	77.9	60.9	np	22.5	53.7	119.4	np	np	211.4	
November	63.8	70.1	52.7	np	np	49.6	102.0	np	np	186.6	
December	56.8	45.7	43.4	np	np	32.6	87.8	np	np	145.8	
December Quarter	193.2	193.6	157.0	np	53.5	135.9	309.2	np	np	543.8	
BED OCCUPANCY RATE (%)											
2002											
December Quarter	40.2	33.9	39.1	np	np	34.3	39.0	np	42.9	37.4	
2003											
October	48.9	48.3	49.7	np	45.2	45.7	51.7	np	np	48.9	
November	44.3	45.0	44.5	np	np	43.6	45.6	np	np	44.6	
December	38.2	29.2	35.4	np	np	27.7	38.0	np	np	34.1	
December Quarter	43.8	40.9	43.2	np	37.3	39.0	45.1	np	np	42.5	

np not available for publication but included in totals where applicable, unless otherwise indicated

(a) Break in time series between the March and June quarters 2003. See Appendix 1 for details.

Period	Licensed hotels with facilities	Motels and guest houses	Serviced apartments	STAR GRADING						Total
				1	2	3	4	5	Ungraded	
GUEST ARRIVALS (a) ('000)										
2002										
December Quarter	76.4	82.5	40.3	np	np	57.2	97.0	np	19.5	199.2
2003										
October	38.1	36.8	15.8	np	10.5	19.6	52.5	np	np	90.6
November	36.0	30.9	12.9	np	np	18.3	45.8	np	np	79.7
December	30.7	23.5	11.5	np	np	13.9	39.7	np	np	65.7
December Quarter	104.7	91.2	40.1	np	24.3	51.8	138.0	np	np	236.0
AVERAGE LENGTH OF STAY (days)										
2002										
December Quarter	2.2	2.1	4.2	np	np	2.5	2.7	np	2.7	2.6
2003										
October	1.9	2.1	3.9	np	2.1	2.7	2.3	np	np	2.3
November	1.8	2.3	4.1	np	np	2.7	2.2	np	np	2.3
December	1.9	1.9	3.8	np	np	2.4	2.2	np	np	2.2
December Quarter	1.8	2.1	3.9	np	2.2	2.6	2.2	np	np	2.3
TAKINGS FROM ACCOMMODATION (a) (\$'000)										
2002										
December Quarter	15 378	7 969	10 435	np	np	6 902	20 055	np	2 131	33 782
2003										
October	6 651	3 644	4 396	np	800	2 454	9 741	np	np	14 691
November	6 181	3 252	4 001	np	np	2 272	8 823	np	np	13 434
December	4 725	2 154	3 028	np	np	1 456	6 817	np	np	9 906
December Quarter	17 556	9 050	11 425	np	1 820	6 182	25 381	np	np	38 031
AVERAGE TAKINGS PER ROOM NIGHT OCCUPIED (\$)										
2002										
December Quarter	132.2	82.7	120.1	np	np	87.3	124.4	np	81.9	112.8
2003										
October	137.1	87.8	134.8	np	80.5	88.1	130.8	np	np	119.8
November	132.1	85.7	133.2	np	np	84.2	128.6	np	np	117.1
December	130.1	83.1	133.9	np	np	82.6	127.5	np	np	116.8
December Quarter	133.4	85.9	134.0	np	75.8	85.3	129.1	np	np	118.0
AVERAGE TAKINGS PER AVAILABLE ROOM NIGHT (\$)										
2002										
December Quarter	90.1	46.7	85.1	np	np	52.3	85.2	np	52.6	72.8
2003										
October	112.2	64.1	113.1	np	54.7	60.1	111.9	np	np	94.8
November	107.8	59.1	106.3	np	np	57.6	104.8	np	np	89.5
December	79.7	39.0	77.9	np	np	35.7	78.3	np	np	64.6
December Quarter	99.8	54.1	99.0	np	43.6	51.1	98.3	np	np	83.0

np not available for publication but included in totals where applicable, unless otherwise indicated

(a) Break in time series between the March and June quarters 2003. See Appendix 1 for details.

Period	South Coast	Illawarra	Sydney	Snowy Mountains	Capital Country	The Murray	Riverina	Explorer Country
--------	-------------	-----------	--------	-----------------	-----------------	------------	----------	------------------

ESTABLISHMENTS, CAPACITY AND EMPLOYMENT (a) (no.)

December Quarter 2002

Establishments	82	32	280	58	67	98	69	121
Guest rooms	2 006	1 118	31 007	2 318	2 131	2 833	1 986	3 560
Bed spaces	6 083	3 592	76 272	9 110	6 044	8 766	5 826	10 559
Persons employed	679	608	19 438	397	917	920	640	1 244

December Quarter 2003

Establishments	82	34	291	59	67	99	70	125
Guest rooms	2 016	1 233	30 560	2 379	2 144	2 878	2 048	3 613
Bed spaces	6 094	3 618	73 535	8 839	6 009	8 803	5 799	10 680
Persons employed	715	626	19 252	381	851	943	626	1 246

ROOM NIGHTS OCCUPIED (a) ('000)

2002								
December Quarter	97.5	60.0	2 086.7	23.8	94.7	140.9	95.2	172.0
2003								
October	35.3	20.4	694.3	9.6	39.6	56.0	39.4	73.9
November	32.7	20.7	769.5	8.5	36.4	49.7	33.8	55.9
December	31.2	19.7	714.0	9.2	27.9	40.8	29.5	51.3
December Quarter	99.2	60.8	2 177.8	27.4	104.0	146.5	102.7	181.1

ROOM OCCUPANCY RATE (%)

2002								
December Quarter	53.0	58.3	73.8	11.2	48.3	54.0	52.1	52.5
2003								
October	56.5	53.2	73.3	15.2	59.6	62.7	62.1	66.0
November	54.1	55.9	83.9	12.5	56.7	57.6	55.0	51.9
December	49.9	51.6	75.3	13.2	42.0	45.7	46.5	46.1
December Quarter	53.5	53.6	77.5	13.6	52.7	55.3	54.5	54.7

GUEST NIGHTS (a) ('000)

2002								
December Quarter	184.4	104.9	3 551.2	51.7	169.7	267.4	160.8	312.3
2003								
October	66.0	34.8	1 120.3	22.1	72.9	102.3	67.5	136.2
November	60.9	34.5	1 234.0	18.4	62.2	90.2	54.6	92.3
December	63.0	37.1	1 294.5	21.2	52.1	79.2	52.5	95.8
December Quarter	189.9	106.4	3 648.7	61.7	187.2	271.7	174.6	324.3

GUEST ARRIVALS (a) ('000)

2002								
December Quarter	105.1	53.0	1 456.5	27.1	105.1	157.5	114.6	215.9
2003								
October	38.4	18.8	476.7	10.8	50.9	56.7	47.1	88.2
November	34.7	20.1	506.5	10.2	39.3	49.7	36.6	62.1
December	36.0	18.7	511.7	10.4	37.8	46.5	39.0	67.6
December Quarter	109.2	57.5	1 494.8	31.4	128.0	153.0	122.7	217.8

TAKINGS FROM ACCOMMODATION (a) (\$'000)

2002								
December Quarter	8 091	6 814	298 872	2 073	9 106	11 383	7 738	13 937
2003								
October	3 040	2 508	105 027	934	3 861	4 621	3 314	6 320
November	2 775	2 434	145 126	742	3 647	4 127	2 845	4 609
December	3 083	2 411	113 312	856	2 677	3 361	2 471	4 192
December Quarter	8 897	7 353	363 465	2 532	10 186	12 109	8 630	15 121

(a) Break in time series between the March and June quarters 2003. See Appendix 1 for details.

Period	Hunter	North Coast NSW	Northern Rivers Tropical NSW	New England North West	Outback NSW	Central Coast	Blue Mountains
ESTABLISHMENTS, CAPACITY AND EMPLOYMENT (a) (no.)							
December Quarter 2002							
Establishments	102	123	75	92	38	39	31
Guest rooms	4 189	3 841	2 126	2 594	946	1 509	1 219
Bed spaces	12 999	12 013	6 683	7 727	2 726	4 914	3 306
Persons employed	2 521	1 773	684	861	270	834	807
December Quarter 2003							
Establishments	104	132	81	95	39	40	32
Guest rooms	4 451	4 106	2 306	2 713	992	1 523	1 248
Bed spaces	13 842	13 590	7 291	8 059	2 897	4 693	3 276
Persons employed	2 704	1 799	742	808	283	798	736
ROOM NIGHTS OCCUPIED (a) ('000)							
2002							
December Quarter	214.9	215.7	111.9	109.0	40.7	75.6	55.7
2003							
October	90.4	85.4	45.0	44.1	18.5	27.1	24.0
November	81.7	74.2	39.6	34.0	13.3	24.8	20.5
December	74.1	77.6	40.4	33.6	12.1	25.1	18.2
December Quarter	246.2	237.2	125.0	111.8	43.9	77.1	62.6
ROOM OCCUPANCY RATE (%)							
2002							
December Quarter	57.3	61.0	58.0	45.7	46.8	54.4	49.7
2003							
October	65.5	67.4	63.0	52.5	60.3	58.8	62.8
November	61.2	60.6	57.2	41.8	44.5	55.7	54.7
December	53.7	61.1	56.5	39.9	39.2	53.7	46.9
December Quarter	60.1	63.1	58.9	44.8	48.1	56.0	54.8
GUEST NIGHTS (a) ('000)							
2002							
December Quarter	413.5	451.3	216.4	184.0	69.1	155.9	97.7
2003							
October	169.6	182.2	91.7	77.1	31.9	56.0	43.6
November	146.6	151.7	79.6	54.8	21.4	51.8	35.5
December	153.0	185.8	91.9	61.6	21.3	55.6	33.5
December Quarter	469.3	519.7	263.2	193.6	74.6	163.4	112.6
GUEST ARRIVALS (a) ('000)							
2002							
December Quarter	215.8	249.0	117.0	126.1	40.8	77.6	64.0
2003							
October	88.2	106.3	48.9	53.2	19.5	29.4	24.1
November	78.5	86.7	43.3	38.7	12.4	30.4	20.6
December	78.9	102.0	44.9	46.7	13.5	29.7	19.5
December Quarter	245.7	295.0	137.2	138.6	45.4	89.5	64.2
TAKINGS FROM ACCOMMODATION (a) (\$'000)							
2002							
December Quarter	26 095	21 584	10 284	8 264	2 728	8 841	6 769
2003							
October	11 258	8 804	3 817	3 448	1 279	3 450	3 029
November	9 999	7 553	3 831	2 635	919	3 110	2 568
December	9 270	9 391	4 506	2 657	812	3 499	2 309
December Quarter	30 527	25 748	12 153	8 741	3 011	10 059	7 906

(a) Break in time series between the March and June quarters 2003. See Appendix 1 for details.

Period	Melbourne	Wimmera	Mallee	Western Western	Grampians	Bendigo Loddon	Peninsula	Central Murray	Goulburn	High Country	Lakes
ESTABLISHMENTS, CAPACITY AND EMPLOYMENT (a) (no.)											
December Quarter 2002											
Establishments	243	6	41	53	19	31	20	23	27	72	23
Guest rooms	19 704	116	1 227	1 416	471	796	712	602	699	1 905	612
Bed spaces	50 039	332	3 673	4 329	1 354	2 382	1 887	1 714	2 017	6 597	1 800
Persons employed	15 235	22	409	743	222	352	401	173	366	601	262
December Quarter 2003											
Establishments	271	6	41	54	20	32	21	21	29	74	23
Guest rooms	21 832	118	1 226	1 429	490	824	714	566	798	2 010	619
Bed spaces	54 231	327	3 651	4 497	1 398	2 429	1 982	1 593	2 335	7 046	1 879
Persons employed	15 485	15	447	720	209	350	372	154	406	731	261
ROOM NIGHTS OCCUPIED (a) ('000)											
2002											
December Quarter	1 260.4	3.3	59.1	74.1	22.6	39.9	30.5	26.2	31.7	44.6	24.6
2003											
October	465.4	1.7	24.7	25.9	9.8	16.5	9.7	10.0	14.4	18.5	8.8
November	514.3	1.3	20.4	26.4	8.0	14.8	11.0	9.1	12.2	18.2	8.9
December	411.2	1.1	16.2	24.9	6.0	9.9	10.5	7.2	9.8	14.4	8.1
December Quarter	1 390.9	4.2	61.2	77.2	23.8	41.1	31.3	26.4	36.5	51.0	25.8
ROOM OCCUPANCY RATE (%)											
2002											
December Quarter	69.5	31.0	52.4	56.9	52.2	54.5	46.5	47.3	49.3	25.4	43.6
2003											
October	70.4	46.1	64.9	58.4	64.2	64.6	43.9	57.2	58.2	30.2	45.8
November	80.2	37.2	55.4	61.7	54.4	59.7	51.5	53.9	51.1	31.0	47.9
December	60.8	31.4	42.6	56.3	39.6	38.7	47.6	40.9	39.8	23.6	42.3
December Quarter	70.3	38.2	54.3	58.7	52.7	54.3	47.7	50.6	49.7	28.2	45.3
GUEST NIGHTS (a) ('000)											
2002											
December Quarter	2 083.5	5.8	100.6	141.1	36.8	69.3	53.2	44.0	53.6	88.1	44.7
2003											
October	748.7	2.7	42.0	46.5	15.6	28.0	16.7	17.0	21.9	36.8	16.4
November	840.2	2.2	32.4	48.3	12.4	25.3	19.1	15.4	19.3	36.3	17.0
December	721.7	1.9	28.3	51.5	10.3	17.8	20.3	12.5	16.0	31.1	17.2
December Quarter	2 310.6	6.7	102.7	146.3	38.3	71.1	56.2	44.8	57.2	104.2	50.7
GUEST ARRIVALS (a) ('000)											
2002											
December Quarter	877.6	4.7	63.8	91.1	28.2	43.7	31.8	28.1	35.6	49.8	32.6
2003											
October	317.4	2.0	25.6	28.7	11.1	17.3	9.2	11.1	14.4	19.6	11.5
November	329.8	1.5	19.0	28.5	9.1	16.5	10.9	9.9	12.8	18.9	11.4
December	306.3	1.4	17.9	29.5	7.5	11.2	10.9	8.1	10.6	16.6	11.8
December Quarter	953.5	4.8	62.6	86.7	27.7	45.0	31.0	29.1	37.8	55.1	34.8
TAKINGS FROM ACCOMMODATION (a) (\$'000)											
2002											
December Quarter	179 469	211	4 638	7 437	1 933	3 690	3 781	2 094	2 672	4 063	2 001
2003											
October	66 554	104	1 942	2 517	835	1 527	1 252	862	1 184	1 674	750
November	80 768	85	1 609	2 574	688	1 408	1 453	776	1 061	1 657	752
December	54 635	75	1 317	2 824	515	908	1 455	629	825	1 370	774
December Quarter	201 957	264	4 869	7 915	2 039	3 843	4 160	2 267	3 070	4 701	2 275

(a) Break in time series between the March and June quarters 2003. See Appendix 1 for details.

Period	Gippsland	Melbourne East	Geelong	Macedon	Spa Country	Ballarat	Central Highlands	Upper Yarra	Murray East	Phillip Island
ESTABLISHMENTS, CAPACITY AND EMPLOYMENT (a) (no.)										
December Quarter 2002										
Establishments	34	14	23	3	5	25	15	11	15	11
Guest rooms	1 018	481	804	72	126	871	357	386	433	375
Bed spaces	2 874	1 200	2 167	163	301	2 734	1 171	996	1 160	1 309
Persons employed	304	472	428	47	127	465	104	200	130	145
December Quarter 2003										
Establishments	33	14	25	3	6	23	13	11	15	11
Guest rooms	999	501	838	75	146	770	301	386	451	375
Bed spaces	2 826	1 297	2 386	204	438	2 489	915	979	1 173	1 252
Persons employed	295	501	469	66	174	372	90	206	146	157
ROOM NIGHTS OCCUPIED (a) ('000)										
2002										
December Quarter	39.6	17.0	40.4	2.2	6.2	45.0	15.3	9.7	18.4	17.1
2003										
October	14.3	6.7	14.6	0.8	2.5	17.3	4.9	3.5	7.3	5.1
November	13.9	7.0	14.3	1.0	2.6	13.1	4.1	3.9	6.5	5.3
December	11.1	5.2	12.9	0.7	1.8	9.8	3.0	2.5	4.8	5.3
December Quarter	39.4	18.9	41.9	2.4	6.8	40.3	12.0	9.9	18.6	15.7
ROOM OCCUPANCY RATE (%)										
2002										
December Quarter	42.2	38.3	54.7	33.2	53.3	56.1	46.6	27.3	46.2	49.4
2003										
October	46.2	42.8	56.1	33.2	54.8	72.6	52.4	29.3	52.0	44.2
November	46.4	46.5	57.1	45.1	58.3	56.9	45.7	33.7	48.2	47.4
December	36.0	33.6	49.8	28.5	49.3	41.1	32.1	20.7	34.7	45.2
December Quarter	42.8	40.9	54.3	35.5	54.4	56.9	43.4	27.9	44.9	45.6
GUEST NIGHTS (a) ('000)										
2002										
December Quarter	61.6	26.0	64.7	2.8	9.8	92.9	28.6	15.7	29.6	38.3
2003										
October	22.2	10.6	24.4	0.9	4.0	38.0	9.0	5.5	12.5	11.5
November	20.7	11.1	23.9	1.2	4.5	26.9	7.8	6.1	10.5	13.0
December	16.8	9.2	23.3	1.0	3.2	20.5	6.2	4.2	8.4	14.0
December Quarter	59.7	30.8	71.5	3.1	11.7	85.4	22.9	15.9	31.4	38.5
GUEST ARRIVALS (a) ('000)										
2002										
December Quarter	37.4	14.4	32.8	1.7	5.6	51.8	17.5	8.8	19.2	23.2
2003										
October	13.8	5.6	12.9	0.7	1.9	21.1	5.7	3.1	7.4	5.9
November	13.2	6.2	12.7	0.7	1.9	15.8	5.1	3.1	6.6	6.7
December	11.2	5.2	12.5	0.8	1.4	11.5	4.1	2.3	5.6	6.6
December Quarter	38.2	16.9	38.1	2.1	5.3	48.4	14.9	8.5	19.6	19.2
TAKINGS FROM ACCOMMODATION (a) (\$'000)										
2002										
December Quarter	2 952	2 165	4 225	230	1 242	4 249	1 250	1 199	1 348	1 912
2003										
October	1 074	847	1 563	99	458	1 684	426	609	532	611
November	1 032	896	1 549	123	502	1 269	365	614	471	559
December	868	633	1 413	74	349	910	273	366	360	652
December Quarter	2 974	2 376	4 525	297	1 308	3 863	1 064	1 589	1 363	1 823

(a) Break in time series between the March and June quarters 2003. See Appendix 1 for details.

Period	Gold Coast	Brisbane	Sunshine Coast	Hervey Bay/Maryborough	Darling Downs	Bundaberg	Fitzroy
ESTABLISHMENTS, CAPACITY AND EMPLOYMENT (a) (no.)							
December Quarter 2002							
Establishments	146	156	102	44	63	27	85
Guest rooms	12 830	9 478	4 736	1 616	1 602	693	3 170
Bed spaces	41 330	26 354	16 214	5 479	5 043	2 151	9 586
Persons employed	8 959	6 455	2 488	782	587	262	1 612
December Quarter 2003							
Establishments	157	160	106	47	65	29	86
Guest rooms	13 448	9 737	4 921	1 802	1 655	738	3 251
Bed spaces	42 626	28 341	16 907	5 647	5 088	2 324	9 959
Persons employed	9 173	6 376	2 390	749	587	318	1 652
ROOM NIGHTS OCCUPIED (a) ('000)							
2002							
December Quarter	843.3	589.5	287.5	77.6	73.6	34.8	177.2
2003							
October	313.1	231.2	112.4	31.8	31.3	13.2	63.5
November	303.1	232.8	99.3	26.4	26.3	12.4	59.5
December	296.0	204.4	103.8	29.0	22.9	11.1	52.6
December Quarter	912.2	668.4	315.5	87.1	80.5	36.7	175.6
ROOM OCCUPANCY RATE (%)							
2002							
December Quarter	71.4	67.6	66.0	52.2	50.0	54.7	60.8
2003							
October	75.1	76.6	73.7	56.9	61.0	57.6	63.0
November	75.1	79.7	67.3	48.8	53.0	55.9	61.0
December	71.0	67.9	68.0	51.9	44.7	48.7	52.2
December Quarter	73.7	74.7	69.7	52.5	52.9	54.1	58.7
GUEST NIGHTS (a) ('000)							
2002							
December Quarter	1 960.8	959.1	745.7	156.2	127.9	64.7	293.8
2003							
October	742.2	369.8	296.6	67.8	56.3	23.5	104.9
November	700.0	364.7	250.1	52.0	43.9	21.6	96.3
December	745.4	358.6	304.4	64.9	42.4	22.0	95.0
December Quarter	2 187.5	1 093.2	851.1	184.7	142.6	67.2	296.1
GUEST ARRIVALS (a) ('000)							
2002							
December Quarter	555.8	406.3	211.4	79.5	90.0	43.3	145.5
2003							
October	212.4	163.1	81.2	30.0	37.3	14.8	52.7
November	210.4	160.3	73.4	26.0	30.5	13.5	47.0
December	213.1	156.8	75.4	27.0	29.9	14.0	49.7
December Quarter	635.9	480.2	230.0	83.1	97.7	42.3	149.4
TAKINGS FROM ACCOMMODATION (a) (\$'000)							
2002							
December Quarter	97 836	63 084	37 658	6 718	5 648	3 020	15 899
2003							
October	39 936	25 595	14 661	2 902	2 416	1 098	5 897
November	34 498	27 910	12 368	2 172	2 032	1 060	5 558
December	38 411	21 789	15 749	2 736	1 829	1 070	5 315
December Quarter	112 846	75 294	42 777	7 809	6 278	3 227	16 770

(a) Break in time series between the March and June quarters 2003. See Appendix 1 for details.

Period	Mackay	Whitsundays	Northern	Tropical North Queensland	Outback	Great Barrier Reef(a)
ESTABLISHMENTS, CAPACITY AND EMPLOYMENT (b) (no.)						
December Quarter 2002						
Establishments	51	28	47	159	55	17
Guest rooms	1 646	2 677	2 157	10 332	1 493	2 732
Bed spaces	4 785	8 972	6 329	31 208	4 303	8 470
Persons employed	890	2 607	1 237	5 527	517	3 041
December Quarter 2003						
Establishments	54	30	51	176	55	18
Guest rooms	1 769	2 701	2 365	11 340	1 474	2 728
Bed spaces	5 219	9 431	6 657	32 801	4 165	9 277
Persons employed	1 010	2 385	1 251	5 823	494	2 904

ROOM NIGHTS OCCUPIED (b) ('000)

2002						
December Quarter	90.8	146.3	115.4	609.4	59.9	159.8
2003						
October	37.5	58.7	53.4	248.1	23.3	62.8
November	36.3	52.6	44.4	226.4	20.9	56.2
December	31.8	51.2	37.3	204.2	16.0	54.7
December Quarter	105.6	162.5	135.0	678.6	60.2	173.7

ROOM OCCUPANCY RATE (%)

2002						
December Quarter	60.0	59.4	58.1	64.1	43.6	63.6
2003						
October	68.3	70.1	72.8	70.6	51.0	74.2
November	68.3	65.0	62.5	66.5	47.3	68.7
December	58.0	61.1	50.8	58.1	35.1	64.7
December Quarter	64.9	65.4	62.0	65.0	44.4	69.2

GUEST NIGHTS (b) ('000)

2002						
December Quarter	153.5	330.7	192.5	1 192.4	86.8	355.1
2003						
October	61.1	134.1	82.1	489.9	33.9	142.3
November	58.4	115.7	66.3	431.8	29.0	123.7
December	58.6	123.9	62.1	427.1	25.5	127.9
December Quarter	178.1	373.7	210.5	1 348.8	88.3	394.0

GUEST ARRIVALS (b) ('000)

2002						
December Quarter	68.5	104.5	89.9	385.2	53.3	88.6
2003						
October	27.8	39.7	38.8	144.8	21.5	32.2
November	26.4	37.4	32.8	137.2	17.8	31.3
December	27.3	38.1	31.6	133.2	16.9	30.8
December Quarter	81.5	115.2	103.1	415.1	56.1	94.3

TAKINGS FROM ACCOMMODATION (b) (\$'000)

2002						
December Quarter	8 072	28 656	10 544	79 685	4 418	38 560
2003						
October	3 838	10 792	5 514	32 977	1 798	14 680
November	3 711	9 487	4 091	29 056	1 587	12 963
December	3 393	11 095	3 503	25 817	1 244	14 610
December Quarter	10 942	31 375	13 108	87 851	4 629	42 253

(a) Includes those parts of other Tourism Regions which fall within the Great Barrier Reef geographic area. Data are not included in Queensland totals.

(b) Break in time series between the March and June quarters 2003. See Appendix 1 for details.

Period	Limestone Coast	Murraylands	Fleurieu Peninsula	Adelaide	Adelaide Hills	Barossa	Riverland	Clare Valley	Flinders Ranges
ESTABLISHMENTS, CAPACITY AND EMPLOYMENT (a) (no.)									
December Quarter 2002									
Establishments	34	4	14	92	4	9	14	4	19
Guest rooms	979	96	493	6 251	132	364	497	128	660
Bed spaces	2 922	311	1 505	17 095	331	1 039	1 496	397	1 877
Persons employed	451	41	259	3 752	122	319	531	78	329
December Quarter 2003									
Establishments	34	4	15	94	4	9	14	4	20
Guest rooms	986	97	453	6 520	132	363	484	128	694
Bed spaces	2 922	305	1 324	17 709	380	1 004	1 418	401	2 052
Persons employed	457	42	310	3 756	121	322	535	90	322
ROOM NIGHTS OCCUPIED (a) ('000)									
2002									
December Quarter	49.6	5.0	19.6	395.5	6.9	19.5	22.3	7.5	32.6
2003									
October	21.5	1.9	8.2	146.4	2.5	8.3	8.4	3.1	13.6
November	19.6	1.7	6.7	130.2	2.3	7.1	7.6	2.5	11.4
December	15.8	1.6	6.3	115.5	2.3	5.2	5.9	2.1	9.2
December Quarter	56.9	5.1	21.2	392.1	7.1	20.5	21.9	7.6	34.2
ROOM OCCUPANCY RATE (%)									
2002									
December Quarter	55.1	56.9	43.2	68.8	56.7	58.2	48.7	63.9	53.7
2003									
October	70.5	63.4	58.1	72.4	62.0	73.4	56.1	77.2	63.2
November	66.2	56.8	49.4	66.6	57.3	65.1	52.2	65.8	54.7
December	51.7	52.0	47.1	57.1	56.9	45.8	39.1	51.8	43.0
December Quarter	62.8	57.4	51.6	65.4	58.8	61.4	49.1	64.9	53.6
GUEST NIGHTS (a) ('000)									
2002									
December Quarter	82.2	8.3	44.7	642.6	13.5	36.4	37.7	13.6	54.3
2003									
October	34.6	3.4	17.3	236.1	4.8	15.8	14.5	5.7	23.3
November	30.2	2.8	13.8	203.5	4.3	12.4	12.4	4.3	17.3
December	26.7	3.1	13.8	200.0	4.8	10.3	10.7	3.9	15.9
December Quarter	91.5	9.3	44.9	639.5	13.9	38.5	37.6	13.9	56.5
GUEST ARRIVALS (a) ('000)									
2002									
December Quarter	55.5	5.1	25.5	255.7	6.1	23.2	25.4	8.5	35.3
2003									
October	21.1	2.1	8.4	98.9	2.2	9.6	9.8	3.6	15.3
November	18.2	1.9	6.9	89.6	1.9	7.9	8.3	2.8	11.2
December	17.2	1.6	6.6	84.2	2.0	6.4	6.8	2.5	10.8
December Quarter	56.5	5.6	21.9	272.6	6.1	23.9	24.9	8.9	37.3
TAKINGS FROM ACCOMMODATION (a) (\$'000)									
2002									
December Quarter	3 811	325	1 760	46 583	723	2 137	1 645	677	2 382
2003									
October	1 587	133	756	18 776	266	847	661	320	1 088
November	1 469	114	607	15 763	233	704	570	258	850
December	1 240	108	601	13 764	235	530	476	208	690
December Quarter	4 296	356	1 963	48 303	735	2 081	1 706	787	2 627

(a) Break in time series between the March and June quarters 2003. See Appendix 1 for details.

<i>Period</i>	<i>Outback SA</i>	<i>Eyre Peninsula</i>	<i>Yorke Peninsula</i>	<i>Kangaroo Island</i>
ESTABLISHMENTS, CAPACITY AND EMPLOYMENT (a) (no.)				
December Quarter 2002				
Establishments	8	23	8	5
Guest rooms	374	755	149	151
Bed spaces	1 030	2 142	451	411
Persons employed	177	511	76	99
December Quarter 2003				
Establishments	9	25	8	6
Guest rooms	651	795	149	192
Bed spaces	1 583	2 269	471	512
Persons employed	187	590	76	130
ROOM NIGHTS OCCUPIED (a) ('000)				
2002				
<i>December Quarter</i>	13.4	34.1	5.0	9.4
2003				
October	6.3	12.3	2.0	4.2
November	4.7	11.1	1.6	3.8
December	4.3	10.8	1.5	3.6
<i>December Quarter</i>	15.3	34.3	5.2	11.5
ROOM OCCUPANCY RATE (%)				
2002				
<i>December Quarter</i>	39.1	49.1	36.5	67.9
2003				
October	31.5	51.3	43.8	70.0
November	24.0	48.7	36.3	65.1
December	21.1	44.0	33.1	60.9
<i>December Quarter</i>	25.5	47.9	37.8	65.3
GUEST NIGHTS (a) ('000)				
2002				
<i>December Quarter</i>	21.7	52.0	8.7	17.4
2003				
October	9.6	18.8	3.3	7.8
November	7.0	16.6	2.4	7.1
December	6.6	17.6	2.8	7.5
<i>December Quarter</i>	23.2	53.0	8.4	22.4
GUEST ARRIVALS (a) ('000)				
2002				
<i>December Quarter</i>	15.7	33.9	5.9	8.3
2003				
October	5.6	11.8	2.1	3.6
November	3.6	9.9	1.6	3.2
December	3.9	11.2	1.9	3.5
<i>December Quarter</i>	13.1	32.8	5.6	10.3
TAKINGS FROM ACCOMMODATION (a) (\$'000)				
2002				
<i>December Quarter</i>	1 133	2 431	334	956
2003				
October	509	918	151	442
November	384	839	113	380
December	336	810	118	405
<i>December Quarter</i>	1 229	2 566	382	1 227

(a) Break in time series between the March and June quarters 2003. See Appendix 1 for details.

Period	South East	Goldfields	Midwest	Gascoyne	Pilbara	Kimberley	Perth	Peel	South West	Great Southern	Wheatbelt
ESTABLISHMENTS, CAPACITY AND EMPLOYMENT (a) (no.)											
December Quarter 2002											
Establishments	10	22	24	12	18	29	99	7	60	21	23
Guest rooms	295	998	841	528	1 370	1 570	9 333	343	2 484	790	630
Bed spaces	880	2 622	2 316	1 464	2 838	4 470	26 013	1 192	7 465	2 364	1 594
Persons employed	119	387	355	205	484	579	5 600	182	1 280	324	238
December Quarter 2003											
Establishments	12	24	24	12	20	29	109	7	63	22	21
Guest rooms	341	1 102	824	544	1 498	1 642	10 242	348	2 543	820	587
Bed spaces	994	2 927	2 289	1 609	2 886	4 566	27 247	1 237	8 115	2 482	1 530
Persons employed	156	431	324	222	514	622	5 678	216	1 222	350	209
ROOM NIGHTS OCCUPIED (a) ('000)											
2002											
December Quarter	14.7	45.9	40.2	20.6	60.1	60.5	614.3	15.4	119.1	33.5	20.4
2003											
October	6.7	17.5	16.9	9.5	30.3	29.9	230.2	5.1	43.4	12.6	9.0
November	6.3	14.5	13.5	7.2	28.3	20.5	215.6	4.6	38.8	10.3	7.2
December	5.7	12.4	10.7	7.4	23.1	13.9	200.3	5.3	41.6	10.6	5.7
December Quarter	18.7	44.3	41.1	24.1	81.8	64.3	646.2	15.0	123.8	33.6	21.9
ROOM OCCUPANCY RATE (%)											
2002											
December Quarter	54.2	50.0	52.0	42.3	47.7	43.1	71.5	48.7	52.1	46.1	35.5
2003											
October	63.5	51.2	66.3	56.1	65.3	58.7	72.5	47.1	55.0	49.6	49.7
November	62.0	43.7	54.6	44.1	63.0	43.3	70.5	44.3	50.9	42.1	40.6
December	53.8	36.2	41.8	43.9	49.8	28.4	63.4	49.1	52.8	41.8	31.3
December Quarter	59.7	43.7	54.2	48.1	59.3	43.7	68.8	46.8	52.9	44.5	40.5
GUEST NIGHTS (a) ('000)											
2002											
December Quarter	25.6	66.2	64.2	34.6	72.5	112.3	1 042.6	39.7	261.4	57.4	29.8
2003											
October	11.7	26.0	27.2	15.9	34.2	57.7	391.9	12.4	90.9	21.7	13.1
November	10.3	20.2	20.6	10.9	32.0	34.6	362.1	10.7	79.9	18.0	9.7
December	10.9	19.1	17.8	12.4	26.8	26.5	375.2	14.1	99.3	19.3	8.8
December Quarter	32.9	65.4	65.7	39.1	93.1	118.8	1 129.2	37.2	270.2	59.0	31.6
GUEST ARRIVALS (a) ('000)											
2002											
December Quarter	13.3	36.0	36.6	14.7	26.7	31.7	394.8	17.9	123.1	33.6	21.2
2003											
October	5.3	13.6	15.8	7.3	11.6	16.0	147.3	5.9	40.1	13.0	9.2
November	4.2	11.0	10.4	5.6	9.9	9.9	138.4	6.3	35.3	10.7	6.9
December	4.3	11.4	10.6	5.8	8.8	8.0	140.4	6.6	41.0	10.8	6.3
December Quarter	13.7	36.0	36.8	18.7	30.3	33.9	426.1	18.8	116.4	34.6	22.4
TAKINGS FROM ACCOMMODATION (a) (\$'000)											
2002											
December Quarter	1 177	4 097	3 203	1 635	5 288	6 493	70 274	1 650	12 938	3 181	1 466
2003											
October	546	1 619	1 380	743	2 701	3 868	29 506	584	4 605	1 160	656
November	488	1 264	1 077	512	2 645	2 210	24 509	496	4 250	963	514
December	518	1 079	909	547	2 086	1 503	23 218	703	5 408	991	423
December Quarter	1 551	3 963	3 366	1 802	7 432	7 582	77 232	1 783	14 263	3 114	1 593

(a) Break in time series between the March and June quarters 2003. See Appendix 1 for details.

<i>Period</i>	<i>Greater Hobart</i>	<i>Southern</i>	<i>East Coast</i>	<i>Northern</i>	<i>Greater Launceston</i>	<i>North West</i>	<i>West Coast</i>
ESTABLISHMENTS, CAPACITY AND EMPLOYMENT (a) (no.)							
December Quarter 2002							
Establishments	43	6	13	4	31	33	10
Guest rooms	2 219	155	498	120	1 373	1 007	425
Bed spaces	6 019	493	1 705	451	4 341	2 950	1 211
Persons employed	1 791	84	315	50	1 062	569	258
December Quarter 2003							
Establishments	45	6	12	4	32	33	11
Guest rooms	2 351	155	450	122	1 416	1 075	461
Bed spaces	6 276	478	1 555	468	4 435	3 312	1 313
Persons employed	1 788	88	284	53	1 103	625	303
ROOM NIGHTS OCCUPIED (a) ('000)							
2002							
<i>December Quarter</i>	147.2	6.9	21.9	5.0	73.1	45.9	15.7
2003							
October	53.2	2.3	6.3	1.7	26.9	17.1	6.7
November	55.6	2.8	7.4	2.0	28.3	17.4	7.2
December	48.5	2.6	7.0	2.2	25.8	15.9	6.0
<i>December Quarter</i>	157.4	7.6	20.7	5.9	81.0	50.4	19.8
ROOM OCCUPANCY RATE (%)							
2002							
<i>December Quarter</i>	72.1	48.0	47.8	45.6	57.9	49.6	40.1
2003							
October	73.0	48.8	45.0	46.1	61.3	51.3	46.5
November	78.9	59.2	54.7	53.6	66.7	53.9	52.1
December	66.6	53.1	50.2	59.1	58.7	47.8	41.7
<i>December Quarter</i>	72.8	53.6	49.9	52.9	62.2	51.0	46.7
GUEST NIGHTS (a) ('000)							
2002							
<i>December Quarter</i>	254.5	15.8	45.0	12.7	132.3	77.5	28.2
2003							
October	93.8	4.8	12.4	3.9	49.1	28.2	12.9
November	95.6	5.5	14.4	5.4	51.1	27.9	13.3
December	97.0	5.3	15.6	5.7	50.8	28.6	12.3
<i>December Quarter</i>	286.3	15.6	42.3	15.0	151.0	84.7	38.4
GUEST ARRIVALS (a) ('000)							
2002							
<i>December Quarter</i>	103.3	10.5	32.3	7.6	75.5	46.0	18.9
2003							
October	39.1	3.7	8.8	2.5	26.4	18.2	9.2
November	41.1	4.2	10.3	3.0	27.7	17.3	9.7
December	40.7	4.1	9.7	3.7	27.6	17.5	9.1
<i>December Quarter</i>	121.0	12.1	28.7	9.2	81.7	53.0	28.0
TAKINGS FROM ACCOMMODATION (a) (\$'000)							
2002							
<i>December Quarter</i>	15 344	599	2 325	432	6 858	4 343	1 310
2003							
October	6 115	214	667	121	2 674	1 678	632
November	6 264	250	818	159	2 802	1 767	696
December	5 962	242	885	182	2 606	1 789	615
<i>December Quarter</i>	18 342	706	2 369	461	8 083	5 234	1 943

(a) Break in time series between the March and June quarters 2003. See Appendix 1 for details.

<i>Period</i>	<i>Darwin</i>	<i>Kakadu</i>	<i>Arnhem</i>	<i>Katherine</i>	<i>Table-lands</i>	<i>Peter-mann</i>	<i>Alice Springs</i>	<i>Mac-Donnell</i>	<i>Canberra</i>
ESTABLISHMENTS, CAPACITY AND EMPLOYMENT (b) (no.)									
December Quarter 2002									
Establishments	35	4	3	9	6	8	22	1	59
Guest rooms	2 652	320	np	513	np	np	1 706	np	5 041
Bed spaces	7 829	983	np	1 419	np	np	5 119	np	14 920
Persons employed	1 263	180	np	163	np	np	760	np	2 153
December Quarter 2003									
Establishments	35	4	3	10	7	8	23	—	58
Guest rooms	2 640	311	83	598	np	np	1 715	—	5 001
Bed spaces	7 543	1 013	284	1 551	np	np	5 538	—	13 945
Persons employed	1 180	173	41	144	np	np	785	—	2 686
ROOM NIGHTS OCCUPIED (b) ('000)									
2002									
<i>December Quarter</i>	130.4	11.8	np	16.9	np	np	86.5	np	299.5
2003									
October	54.1	5.2	0.8	8.9	np	np	31.5	—	122.6
November	42.5	4.0	0.9	6.3	np	np	25.1	—	114.7
December	34.7	2.1	0.5	4.8	np	np	19.9	—	84.8
<i>December Quarter</i>	131.3	11.3	2.2	19.9	np	np	76.6	—	322.2
ROOM OCCUPANCY RATE (%)									
2002									
<i>December Quarter</i>	53.4	40.2	np	35.9	np	np	55.1	np	64.6
2003									
October	66.1	54.3	32.4	47.9	np	np	59.3	—	79.1
November	53.7	42.6	34.9	35.0	np	np	48.8	—	76.5
December	42.4	21.5	18.5	25.7	np	np	37.5	—	55.3
<i>December Quarter</i>	54.1	39.5	28.5	36.2	np	np	48.5	—	70.3
GUEST NIGHTS (b) ('000)									
2002									
<i>December Quarter</i>	209.2	22.3	np	33.5	np	np	145.9	np	513.8
2003									
October	87.9	9.6	1.4	14.9	np	np	54.9	—	211.4
November	66.2	6.9	1.4	11.1	np	np	41.2	—	186.6
December	59.0	3.7	0.8	9.7	np	np	33.8	—	145.8
<i>December Quarter</i>	213.1	20.2	3.6	35.7	np	np	129.9	—	543.8
GUEST ARRIVALS (b) ('000)									
2002									
<i>December Quarter</i>	90.8	19.2	np	23.4	np	np	71.3	np	199.2
2003									
October	38.1	7.9	0.7	10.1	np	np	26.1	—	90.6
November	28.8	5.6	0.7	7.9	np	np	21.0	—	79.7
December	25.2	2.5	0.4	6.5	np	np	17.2	—	65.7
<i>December Quarter</i>	92.1	16.0	1.8	24.5	np	np	64.3	—	236.0

— nil or rounded to zero (including null cells)

np not available for publication but included in totals where applicable, unless otherwise indicated

(a) The Tourism Region of Daly does not appear in this table as there are no establishments in-scope of the collection in this region.

(b) Break in time series between the March and June quarters 2003. See Appendix 1 for details.

<i>Period</i>	<i>Darwin</i>	<i>Kakadu</i>	<i>Arnhem</i>	<i>Katherine</i>	<i>Table-lands</i>	<i>Peter-mann</i>	<i>Alice Springs</i>	<i>Mac-Donnell</i>	<i>Canberra</i>
TAKINGS FROM ACCOMMODATION (b) (\$'000)									
2002									
<i>December Quarter</i>	12 627	1 370	np	1 191	np	np	7 580	np	33 782
2003									
October	5 663	693	172	730	np	np	2 744	—	14 691
November	4 237	369	153	509	np	np	2 144	—	13 434
December	3 469	204	73	399	np	np	1 585	—	9 906
<i>December Quarter</i>	13 369	1 267	399	1 638	np	np	6 473	—	38 031

— nil or rounded to zero (including null cells)

np not available for publication but included in totals where applicable, unless otherwise indicated

(a) The Tourism Region of Daly does not appear in this table as there are no establishments in-scope of the collection in this region.

(b) Break in time series between the March and June quarters 2003. See Appendix 1 for details.

Period	Licensed hotels with facilities	Motels and guest houses	Serviced apartments	STAR GRADING						Ungraded	Total
				1	2	3	4	5			
ESTABLISHMENTS, CAPACITY AND EMPLOYMENT(a) (no.)											
September Quarter 2002											
Establishments	780	2 388	675	62	449	1 848	952	109	423	3 843	
Guest rooms	77 603	83 592	35 610	2 207	13 305	69 176	72 721	24 670	14 726	196 805	
Bed spaces	203 531	244 527	117 523	6 991	39 335	203 724	208 493	63 775	43 263	565 581	
Persons employed	69 923	29 459	12 141	803	5 245	26 035	38 382	34 316	6 742	111 523	
September Quarter 2003											
Establishments	794	2 416	775	66	374	1 865	1 311	122	247	3 985	
Guest rooms	77 914	85 198	39 921	2 711	11 447	67 991	88 648	24 186	8 050	203 033	
Bed spaces	203 346	247 709	129 429	8 405	32 999	200 265	256 487	60 481	21 847	580 484	
Persons employed	r70 105	30 074	13 268	605	4 941	24 095	44 990	r35 047	3 769	r113 447	
ROOM NIGHTS OCCUPIED (a) ('000)											
2002											
September Quarter	4 469.9	4 152.8	2 155.7	94.8	578.3	3 486.9	4 411.1	1 490.0	717.3	10 778.4	
2003											
July	1 576.0	1 462.8	846.1	48.9	159.0	1 195.6	1 841.6	520.5	119.3	3 884.9	
August	1 610.8	1 419.1	815.4	43.7	154.5	1 158.2	1 825.7	546.8	116.3	3 845.2	
September	1 622.7	1 474.5	830.7	41.4	155.0	1 206.7	1 865.6	538.9	120.5	3 928.0	
September Quarter	4 809.5	4 356.4	2 492.2	134.0	468.5	3 560.5	5 532.9	1 606.2	356.1	11 658.1	
ROOM OCCUPANCY RATE (%)											
2002											
September Quarter	62.7	54.0	65.9	46.7	47.4	54.8	66.0	65.6	53.3	59.6	
2003											
July	65.2	55.5	69.1	58.2	44.8	56.8	67.0	69.4	50.3	61.9	
August	66.7	53.8	66.2	52.0	43.6	55.0	66.5	72.9	47.8	61.2	
September	69.4	57.7	69.6	50.8	45.2	59.3	70.2	74.3	50.0	64.5	
September Quarter	67.1	55.6	68.3	53.7	44.5	57.0	67.9	72.2	49.4	62.5	
GUEST NIGHTS (a) ('000)											
2002											
September Quarter	7 438.9	7 311.3	4 673.5	198.0	1 032.2	6 413.8	7 912.1	2 476.9	1 390.8	19 423.8	
2003											
July	2 653.2	2 640.1	1 898.7	104.4	292.7	2 304.0	3 429.5	851.1	210.3	7 192.0	
August	2 628.8	2 457.2	1 718.6	90.2	272.7	2 126.0	3 231.3	881.8	202.6	6 804.6	
September	2 657.6	2 608.9	1 829.8	77.7	278.9	2 264.7	3 394.9	869.3	210.8	7 096.2	
September Quarter	7 939.5	7 706.3	5 447.0	272.2	844.4	6 694.6	10 055.7	2 602.2	623.7	21 092.8	
BED OCCUPANCY RATE (%)											
2002											
September Quarter	39.8	32.5	43.3	30.8	28.6	34.2	41.3	42.2	35.1	37.4	
2003											
July	42.1	34.4	47.6	40.1	28.6	37.2	43.1	45.4	32.3	40.0	
August	41.7	32.0	43.0	34.6	26.7	34.3	40.7	47.0	30.6	37.9	
September	43.6	35.1	47.4	30.8	28.2	37.8	44.1	47.9	32.3	40.8	
September Quarter	42.4	33.8	46.0	35.2	27.8	36.4	42.6	46.8	31.7	39.6	

r revised

(a) Break in time series between the March and June quarters 2003. See Appendix 1 for details.

Period	Licensed hotels with facilities	Motels and guest houses	Serviced apartments	STAR GRADING						Ungraded	Total
				1	2	3	4	5			
GUEST ARRIVALS (a) ('000)											
2002											
September Quarter	3 217.7	4 143.1	1 257.7	104.7	585.9	3 296.5	3 162.4	959.4	509.6	8 618.5	
2003											
July	1 098.5	1 478.3	511.1	53.9	159.6	1 124.0	1 320.8	340.9	88.7	3 087.9	
August	1 125.4	1 385.4	480.0	49.3	149.2	1 053.0	1 294.4	356.4	88.6	2 990.8	
September	1 116.1	1 468.8	503.5	46.1	154.1	1 122.5	1 339.4	336.9	89.4	3 088.4	
September Quarter	3 340.0	4 332.5	1 494.5	149.3	463.0	3 299.6	3 954.6	1 034.2	266.6	9 167.1	
AVERAGE LENGTH OF STAY (days)											
2002											
September Quarter	2.3	1.8	3.7	1.9	1.8	1.9	2.5	2.6	2.7	2.3	
2003											
July	2.4	1.8	3.7	1.9	1.8	2.0	2.6	2.5	2.4	2.3	
August	2.3	1.8	3.6	1.8	1.8	2.0	2.5	2.5	2.3	2.3	
September	2.4	1.8	3.6	1.7	1.8	2.0	2.5	2.6	2.4	2.3	
September Quarter	2.4	1.8	3.6	1.8	1.8	2.0	2.5	2.5	2.3	2.3	
TAKINGS FROM ACCOMMODATION (a) (\$'000)											
2002											
September Quarter	609 027	371 657	256 186	7 295	39 400	315 557	536 139	265 067	73 412	1 236 869	
2003											
July	213 677	134 572	104 223	3 377	11 689	107 520	223 767	94 280	11 837	452 471	
August	225 712	131 511	101 268	2 873	11 561	104 444	224 433	103 073	12 107	458 491	
September	225 123	133 555	103 849	2 572	10 779	105 543	229 495	102 517	11 621	462 527	
September Quarter	664 512	399 637	309 339	8 822	34 029	317 507	677 696	299 870	35 565	1 373 488	
AVERAGE TAKINGS PER ROOM NIGHT OCCUPIED (\$)											
2002											
September Quarter	136.3	89.5	118.8	77.0	68.1	90.5	121.5	177.9	102.3	114.8	
2003											
July	135.6	92.0	123.2	69.1	73.5	89.9	121.5	181.1	99.2	116.5	
August	140.1	92.7	124.2	65.7	74.8	90.2	122.9	188.5	104.1	119.2	
September	138.7	90.6	125.0	62.2	69.6	87.5	123.0	190.2	96.5	117.8	
September Quarter	138.2	91.7	124.1	65.9	72.6	89.2	122.5	186.7	99.9	117.8	
AVERAGE TAKINGS PER AVAILABLE ROOM NIGHT (\$)											
2002											
September Quarter	85.5	48.4	78.3	35.9	32.3	49.6	80.2	116.8	54.5	68.4	
2003											
July	88.5	51.0	85.1	40.2	32.9	51.1	81.5	125.7	49.9	72.1	
August	93.4	49.8	82.3	34.2	32.6	49.6	81.7	137.5	49.8	72.9	
September	96.3	52.3	87.0	31.6	31.4	51.8	86.3	141.3	48.3	76.0	
September Quarter	92.7	51.0	84.7	35.4	32.3	50.8	83.1	134.8	49.3	73.6	

(a) Break in time series between the March and June quarters 2003. See Appendix 1 for details.

Period	Licensed hotels with facilities	Motels and guest houses	Serviced apartments	STAR GRADING						Ungraded	Total
				1	2	3	4	5			
ESTABLISHMENTS, CAPACITY AND EMPLOYMENT (a) (no.)											
September Quarter 2002											
Establishments	132	494	89	8	64	372	206	21	44	715	
Guest rooms	12 576	15 520	5 088	313	1 676	11 804	13 151	4 217	2 023	33 184	
Bed spaces	30 160	44 804	15 269	907	5 137	33 630	35 179	9 395	5 985	90 233	
Persons employed	14 258	5 427	1 780	110	688	4 234	6 383	8 963	1 087	21 465	
September Quarter 2003											
Establishments	134	508	106	5	51	356	292	22	22	748	
Guest rooms	13 041	16 225	5 676	292	1 436	11 712	16 188	4 541	773	34 942	
Bed spaces	30 158	47 452	17 240	892	4 435	33 512	43 940	9 661	2 410	94 850	
Persons employed	r14 270	5 877	1 750	58	634	3 946	7 488	r9 270	501	r21 897	
ROOM NIGHTS OCCUPIED (a) ('000)											
2002											
September Quarter	704.8	655.2	312.7	15.0	46.4	511.1	734.4	262.8	103.0	1 672.6	
2003											
July	251.1	233.9	126.1	6.1	13.4	178.4	301.7	99.3	12.2	611.1	
August	268.4	224.5	119.4	5.6	12.9	170.6	303.0	108.2	12.0	612.3	
September	254.2	231.7	113.4	5.7	12.4	174.2	295.2	99.5	12.2	599.3	
September Quarter	773.7	690.1	358.9	17.4	38.7	523.3	899.8	307.1	36.4	1 822.7	
ROOM OCCUPANCY RATE (%)											
2002											
September Quarter	61.0	45.9	67.3	52.2	30.5	47.1	60.9	67.7	55.4	54.9	
2003											
July	62.1	46.5	71.7	67.3	30.1	49.1	60.1	70.6	50.8	56.4	
August	66.4	44.6	67.8	62.2	28.9	47.0	60.4	76.9	50.2	56.5	
September	65.0	47.6	66.6	65.4	28.9	49.6	60.8	73.1	52.6	57.2	
September Quarter	64.5	46.2	68.7	64.9	29.3	48.6	60.4	73.5	51.2	56.7	
GUEST NIGHTS (a) ('000)											
2002											
September Quarter	1 085.9	1 150.7	596.1	25.7	87.1	931.3	1 205.5	390.5	192.6	2 832.7	
2003											
July	389.7	417.9	252.1	11.7	25.4	334.8	519.0	146.6	22.3	1 059.7	
August	411.8	385.7	226.7	10.7	24.3	311.5	499.8	156.1	21.8	1 024.2	
September	389.8	403.4	215.1	10.8	22.3	317.9	493.0	143.2	21.0	1 008.3	
September Quarter	1 191.3	1 207.0	693.9	33.1	72.0	964.2	1 511.8	445.9	65.2	3 092.2	
BED OCCUPANCY RATE (%)											
2002											
September Quarter	39.2	27.9	42.7	30.7	18.7	30.1	37.4	45.2	35.0	34.2	
2003											
July	41.7	28.4	47.2	42.2	18.5	32.2	38.1	48.9	29.8	36.0	
August	44.0	26.2	42.4	38.7	17.7	30.0	36.7	52.1	29.2	34.8	
September	43.1	28.3	41.6	40.3	16.7	31.6	37.4	49.4	29.1	35.4	
September Quarter	42.9	27.6	43.7	40.4	17.6	31.3	37.4	50.2	29.4	35.4	

r revised

(a) Break in time series between the March and June quarters 2003. See Appendix 1 for details.

Period	Licensed hotels with facilities	Motels and guest houses	Serviced apartments	STAR GRADING						Ungraded	Total
				1	2	3	4	5			
GUEST ARRIVALS (a) ('000)											
2002											
September Quarter	553.4	667.4	169.3	22.9	50.5	489.0	596.8	172.4	58.5	1 390.0	
2003											
July	178.3	237.0	80.8	9.4	13.8	168.2	230.2	67.1	7.5	496.1	
August	190.2	225.3	75.3	8.9	13.5	160.0	228.5	71.7	8.3	490.9	
September	179.7	237.2	67.1	8.8	12.8	164.8	226.2	63.6	7.7	484.0	
September Quarter	548.2	699.5	223.3	27.1	40.1	492.9	684.9	202.4	23.5	1 471.0	
AVERAGE LENGTH OF STAY (days)											
2002											
September Quarter	2.0	1.7	3.5	1.1	1.7	1.9	2.0	2.3	3.3	2.0	
2003											
July	2.2	1.8	3.1	1.2	1.8	2.0	2.3	2.2	3.0	2.1	
August	2.2	1.7	3.0	1.2	1.8	1.9	2.2	2.2	2.6	2.1	
September	2.2	1.7	3.2	1.2	1.7	1.9	2.2	2.3	2.7	2.1	
September Quarter	2.2	1.7	3.1	1.2	1.8	2.0	2.2	2.2	2.8	2.1	
TAKINGS FROM ACCOMMODATION (a) (\$'000)											
2002											
September Quarter	105 142	62 915	42 984	851	3 239	48 179	93 944	51 939	12 887	211 041	
2003											
July	35 925	22 961	17 255	356	860	16 844	38 261	18 263	1 558	76 141	
August	38 857	22 208	17 065	335	825	16 416	39 020	20 037	1 498	78 130	
September	37 024	21 705	15 759	327	763	15 445	37 291	19 167	1 496	74 489	
September Quarter	111 806	66 875	50 079	1 018	2 448	48 705	114 571	57 467	4 552	228 760	
AVERAGE TAKINGS PER ROOM NIGHT OCCUPIED (\$)											
2002											
September Quarter	149.2	96.0	137.5	56.6	69.8	94.3	127.9	197.7	125.2	126.2	
2003											
July	143.1	98.2	136.8	58.5	64.3	94.4	126.8	183.9	128.0	124.6	
August	144.8	98.9	142.9	59.5	64.0	96.2	128.8	185.2	124.5	127.6	
September	145.7	93.7	139.0	57.0	61.3	88.7	126.3	192.6	122.6	124.3	
September Quarter	144.5	96.9	139.5	58.3	63.2	93.1	127.3	187.1	125.0	125.5	
AVERAGE TAKINGS PER AVAILABLE ROOM NIGHT (\$)											
2002											
September Quarter	91.1	44.1	92.5	29.6	21.3	44.4	77.9	133.9	69.4	69.3	
2003											
July	88.9	45.7	98.1	39.3	19.3	46.4	76.2	129.7	65.0	70.3	
August	96.1	44.2	97.0	37.0	18.5	45.2	77.8	142.3	62.5	72.1	
September	94.6	44.6	92.5	37.3	17.7	44.0	76.8	140.7	64.5	71.1	
September Quarter	93.2	44.8	95.9	37.9	18.5	45.2	76.9	137.6	64.0	71.2	

(a) Break in time series between the March and June quarters 2003. See Appendix 1 for details.

Period	Melbourne	Wimmera	Mallee	Western Western	Western Grampians	Bendigo Loddon	Peninsula	Central Murray	Goulburn	High Country
ESTABLISHMENTS, CAPACITY AND EMPLOYMENT (a) (no.)										
September Quarter 2002										
Establishments	244	6	41	53	19	30	20	23	27	73
Guest rooms	19 683	116	1 226	1 412	479	761	708	602	700	1 964
Bed spaces	49 845	333	3 673	4 348	1 370	2 286	1 879	1 701	2 008	6 887
Persons employed	15 376	30	459	718	201	353	377	172	363	808
September Quarter 2003										
Establishments	267	6	41	54	20	32	21	22	29	75
Guest rooms	21 155	116	1 226	1 425	491	824	715	580	798	2 060
Bed spaces	53 499	318	3 671	4 495	1 469	2 430	1 919	1 617	2 323	7 136
Persons employed	15 390	16	439	677	226	366	367	154	466	1 041
ROOM NIGHTS OCCUPIED (a) ('000)										
2002										
September Quarter	1 151.4	3.5	57.6	56.9	21.5	37.2	24.5	24.2	30.4	77.8
2003										
July	421.7	1.0	19.9	19.7	7.2	14.4	7.2	7.6	11.8	33.4
August	432.1	1.0	18.2	17.8	7.2	12.6	7.8	7.0	10.4	32.8
September	412.1	1.0	21.5	20.3	7.7	12.9	7.5	8.4	11.5	25.6
September Quarter	1 266.0	3.0	59.7	57.8	22.2	39.9	22.5	23.1	33.8	91.8
ROOM OCCUPANCY RATE (%)										
2002										
September Quarter	63.7	32.5	51.1	43.8	48.9	53.1	37.6	43.8	47.3	43.7
2003										
July	64.3	27.7	52.5	44.6	47.5	56.3	32.7	42.1	47.8	52.3
August	65.9	27.5	48.0	40.3	47.5	49.4	35.1	39.2	42.2	51.3
September	64.9	30.0	58.5	47.4	52.4	52.2	34.9	48.5	48.1	41.4
September Quarter	65.0	28.4	52.9	44.1	49.1	52.6	34.2	43.2	46.0	48.4
GUEST NIGHTS (a) ('000)										
2002										
September Quarter	1 875.8	5.3	95.4	104.7	35.2	65.0	41.4	39.9	45.2	204.3
2003										
July	700.7	1.6	33.3	37.4	11.0	25.4	12.3	13.4	17.9	88.5
August	698.5	1.5	27.7	31.3	11.0	20.6	12.8	12.2	15.6	84.0
September	667.0	1.6	35.4	37.9	11.9	21.0	13.2	14.5	17.2	63.2
September Quarter	2 066.2	4.8	96.4	106.6	33.9	67.0	38.4	40.1	50.7	235.7
GUEST ARRIVALS (a) ('000)										
2002										
September Quarter	820.3	4.3	63.2	64.9	27.4	42.6	22.8	25.8	30.5	96.4
2003										
July	294.5	1.4	20.5	23.5	8.4	15.5	5.8	9.1	11.7	34.1
August	303.1	1.3	17.6	20.5	8.3	13.3	6.9	8.7	10.4	34.6
September	285.5	1.2	22.4	22.7	8.9	13.1	6.6	10.0	11.3	27.0
September Quarter	883.1	3.8	60.6	66.7	25.6	41.8	19.3	27.8	33.5	95.7
TAKINGS FROM ACCOMMODATION (a) (\$'000)										
2002										
September Quarter	158 633	206	4 441	5 145	1 822	3 390	2 771	1 943	2 447	13 422
2003										
July	55 221	63	1 556	1 837	614	1 417	822	600	1 013	6 437
August	57 446	63	1 425	1 617	597	1 191	961	552	875	7 120
September	55 981	68	1 650	1 873	651	1 175	879	646	965	3 696
September Quarter	168 648	194	4 631	5 326	1 862	3 784	2 663	1 798	2 854	17 253

r revised

(a) Break in time series between the March and June quarters 2003. See Appendix 1 for details.

Period	Lakes	Gippsland	Melbourne East	Geelong	Macedon	Spa Country	Ballarat	Central Highlands	Upper Yarra	Murray East	Phillip Island
ESTABLISHMENTS, CAPACITY AND EMPLOYMENT (a) (no.)											
September Quarter 2002											
Establishments	23	34	14	23	3	5	25	15	11	15	11
Guest rooms	616	1 007	481	803	72	126	872	359	386	436	375
Bed spaces	1 784	2 884	1 197	2 189	163	327	2 718	1 157	996	1 157	1 331
Persons employed	231	320	476	412	48	131	448	98	202	113	129
September Quarter 2003											
Establishments	23	33	14	25	4	6	24	14	11	16	11
Guest rooms	613	998	482	837	95	147	829	326	385	465	375
Bed spaces	1 798	2 834	1 286	2 329	261	361	2 581	990	995	1 223	1 315
Persons employed	241	293	498	493	67	175	411	94	219	147	117

ROOM NIGHTS OCCUPIED (a) ('000)

2002											
September Quarter	16.1	33.1	14.0	33.6	2.4	5.8	37.1	12.0	10.4	13.5	9.5
2003											
July	5.9	11.3	5.1	12.3	1.1	2.5	13.3	3.8	3.1	5.1	3.8
August	5.7	11.0	5.8	12.1	1.1	2.1	12.4	3.1	3.1	5.4	3.4
September	7.0	11.9	5.1	12.5	1.0	2.2	13.7	4.3	3.0	6.2	3.8
September Quarter	18.5	34.2	16.0	36.8	3.2	6.8	39.4	11.2	9.2	16.6	11.0

ROOM OCCUPANCY RATE (%)

2002											
September Quarter	28.9	35.7	31.7	45.5	36.1	50.0	46.2	36.4	29.3	33.7	27.6
2003											
July	30.8	36.6	33.8	47.2	36.0	54.0	51.7	37.5	25.6	35.4	32.5
August	29.8	35.6	38.9	46.7	38.5	45.9	48.4	30.7	26.3	37.4	29.4
September	37.8	39.6	35.3	49.6	35.2	50.7	55.1	44.3	26.2	44.1	33.8
September Quarter	32.8	37.2	36.0	47.8	36.6	50.2	51.7	37.4	26.1	38.9	31.9

GUEST NIGHTS (a) ('000)

2002											
September Quarter	27.5	46.7	22.1	51.8	2.8	9.6	73.1	24.3	16.8	22.6	23.1
2003											
July	11.0	17.2	8.2	18.8	1.3	4.2	27.5	7.0	5.0	9.0	9.1
August	10.3	16.2	8.9	18.4	1.3	3.6	23.8	5.4	4.9	8.5	7.8
September	13.5	17.0	7.9	20.1	1.2	3.9	28.8	8.1	4.7	10.7	9.3
September Quarter	34.8	50.4	25.0	57.3	3.7	11.7	80.1	20.5	14.5	28.2	26.2

GUEST ARRIVALS (a) ('000)

2002											
September Quarter	20.6	29.7	11.6	27.1	1.6	5.8	42.3	15.1	8.9	15.2	13.8
2003											
July	8.1	10.6	4.1	10.9	0.8	2.2	16.6	4.4	2.9	5.8	5.2
August	7.8	10.2	4.8	11.0	0.9	2.0	12.6	4.0	3.0	5.3	4.6
September	10.1	10.1	4.6	11.7	1.0	2.1	15.4	5.5	2.6	6.6	5.4
September Quarter	26.0	30.9	13.6	33.6	2.7	6.4	44.6	13.8	8.5	17.7	15.3

TAKINGS FROM ACCOMMODATION (a) (\$'000)

2002											
September Quarter	1 296	2 402	1 754	2 850	254	944	3 336	925	1 102	1 013	944
2003											
July	526	880	623	1 228	112	454	1 225	308	442	378	385
August	503	818	692	1 196	149	374	1 146	276	380	391	358
September	647	895	612	1 312	131	407	1 247	348	418	479	406
September Quarter	1 677	2 593	1 927	3 736	392	1 235	3 618	932	1 240	1 249	1 149

(a) Break in time series between the March and June quarters 2003. See Appendix 1 for details.

EXPLANATORY NOTES

INTRODUCTION

1 This publication presents data from the quarterly Survey of Tourist Accommodation (STA). The STA is a mailout collection that completely enumerates all in-scope accommodation establishments within Australia.

SCOPE

2 On a quarterly basis the STA includes hotels, motels, guest houses and serviced apartments with 15 or more rooms or units.

3 For 2003 the scope of the STA has been expanded to include:

- holiday flats, units and houses of letting entities with 15 or more rooms or units
- caravan parks with 40 or more powered sites
- visitor hostels with 25 or more bed spaces.

4 Short-term non-residential accommodation, which is in scope of the STA, is accommodation which is not leased, and which is provided to guests who would generally stay for periods of less than two months.

5 Some establishments also provide long-term residential accommodation. For hotels, motels, guest houses and serviced apartments, the amount of such activity is considered to be insignificant and is included in the data presented in this publication.

DEFINITIONS OF ACCOMMODATION ESTABLISHMENTS

6 For 2003 the STA includes the following categories of establishments which provide predominantly short-term non-residential accommodation to the general public:

- hotels and resorts with facilities - establishments with 15 or more rooms which are licensed to operate a public bar and which provide accommodation on a room/suite basis, with a bath/shower and toilet in most guest rooms, but which do not have full cooking facilities (i.e. hot plates and oven/microwave) in most guest rooms
- motels, private hotels and guest houses with facilities - establishments with 15 or more rooms which are not licensed to operate a public bar, and which provide accommodation on a room/suite basis, with a bath/shower and toilet in most guest rooms, but which do not have full cooking facilities (i.e. hot plates and oven/microwave) in most guest rooms
- serviced apartments - establishments with 15 or more units which mostly comprise self-contained units at the same location, and which are available on a unit/apartment basis to the general public for a minimum of one night. The units should have full cooking facilities (i.e. hot plates and oven/microwave), refrigerator and bath/shower and toilet facilities; all bed linen and towels should be provided, and daily servicing (i.e. cleaning and bed making) must be available through the on-site management, although this service may not necessarily be used
- holiday flats, units and houses - (excluding establishments predominantly operated on a time-share basis) which are operated by owners, managers or real estate agents who have sole letting rights to at least 15 flats, units or houses for short-term letting. These flats, units or houses should be mainly self-contained in terms of cooking, bath (or shower) and toilet facilities and should not have breakfast available for guests. Data for holiday flats units or houses include short-term owner operators as well as paying guest occupation
- caravan parks - establishments with 40 or more powered sites and cabins which provide either short-term or long-term accommodation to the general public and which provide powered sites for caravans and toilet, shower and laundry facilities for guests
- visitor hostels - establishments with 25 or more bed spaces which provide accommodation to visitors on a bed basis (rather than by room). This category does not include establishments providing charity type accommodation (e.g. Salvation Army hostels) nor hotels, motels and guest houses without in-room facilities which provide accommodation on a per room basis.

EXPLANATORY NOTES *continued*

COVERAGE

7 The ABS has collected data for holiday flats, units and houses, caravan parks and visitor hostels for all quarters in 2003. These data will be released after December quarter 2003 data has been collected and processed.

8 The main source of coverage is from the Australian Automobile Association through AAA Tourism. This is supplemented by notification of new tourism developments and their likely opening dates in selected guides, major tourism journals and periodicals and newspapers. Periodic comparison with lists of accommodation establishments provided by the various tourism commissions and industry associations is also undertaken.

DATA QUALITY

9 The survey does not have a sample component and the data are not subject to sampling variability. However, other inaccuracies collectively referred to as non-sampling error may affect the data. These non-sampling errors may arise from a number of sources, including:

- errors in the reporting of data by providers
- errors in the process of capturing data
- estimation for missing data
- definition and classification errors
- incomplete coverage.

10 Every effort has been made to reduce non-sampling error to a minimum by careful design and testing of questionnaires, and efficient operating procedures and systems used to compile statistics.

11 The December quarter 2003 response rates were:

- 94% licensed hotels
- 94% motels and guest houses
- 92% serviced apartments.

BREAK IN TIME SERIES

12 In the June quarter 2003 the ABS identified 132 hotels, motels and guest houses and serviced apartments which had been operating for a number of quarters but were not on the STA frame. These additional establishments were included in the STA from the June quarter 2003.

13 The addition of the 132 tourism establishments resulted in a break in time series between the March and June quarters 2003. The impact of the break in time series is explained in Appendix 1. Particular care needs to be taken for all calculations of percentage changes that cross the break in series.

TAKINGS FROM ACCOMMODATION

14 From 1 July 2000, takings from accommodation include gross revenue from the provision of accommodation, including GST. Takings from meals are excluded. Where businesses are unable to provide the data inclusive of GST, it is automatically adjusted by the ABS prior to aggregation and release in output.

STATISTICAL GEOGRAPHY

15 Small area statistics for 2003 are classified to the *Australia Standard Geographical Classification (ASGC), 2001 Edition* (cat. no. 1216.0). Data are coded to the statistical local area (SLA) level.

16 These SLA data are aggregated to tourism regions as defined by relevant state and territory tourist commissions. Tourism regions are reviewed annually and are subject to boundary and name changes. Where changes have occurred care should be taken when making comparisons with previously published data at this level.

17 Details of SLAs, the composition of tourism regions, major changes to tourism regions and outline maps of tourism regions are provided on the Tourism Theme Page of the ABS web site <www.abs.gov.au>.

EXPLANATORY NOTES *continued*

SEASONAL ADJUSTMENT

18 Seasonal adjustment is a means of removing the estimated effects of normal seasonal variation from the original time series so that the effect of other influences on the series may be more clearly recognised. Seasonal adjustment procedures do not aim to remove the irregular or non-seasonal influences which may be present in any particular month. Irregular influences that are highly volatile can make it difficult to interpret the movement of the series even after adjustment for seasonal variation, and cannot be assumed to indicate changes in the trend.

19 The way in which seasonally adjusted and trend estimates were calculated changed from a Forward Factor methodology to a Concurrent methodology in March quarter 2003. The Forward Factor method relied on an annual analysis of the original time series to estimate seasonal factors that were to be applied in the forthcoming four quarters. Under this method the projected seasonal factors, or forward factors, were not updated until the next annual analysis. The Concurrent methodology uses the most up to date original time series available at each reference period to estimate seasonal factors thus eliminating the need to use projected seasonal factors.

TREND ESTIMATES

20 Smoothing the seasonally adjusted series reduces the impact of the irregular component of the seasonally adjusted series and creates the trend estimates. The trend estimates are derived by applying a 7-term Henderson moving average to the quarterly seasonally adjusted series. The Henderson moving average used in the middle of the time series is symmetric but, as the end of a time series is approached, asymmetric forms of the symmetric moving average are applied. Unlike the weights of the standard 7-term Henderson moving average, the weights used with the quarterly data have been tailored to suit the particular characteristics of individual series.

21 While these techniques enable trend estimates for the latest period to be produced, the process does result in revisions to the trend estimates in recent months, particularly as additional original estimates become available. For further information refer to *Information Paper: A Guide to Interpreting Time Series - Monitoring Trends, 2003* (cat. no. 1349.0) available at the ABS web site <www.abs.gov.au> .

EFFECTS OF ROUNDING

22 Where figures have been rounded, discrepancies may occur between totals and the sum of the component items.

RELATED PUBLICATIONS

23 Other ABS publications and products which may be of interest are outlined below. Please note, older publications may no longer be available through ABS bookshops but are available through ABS libraries. All publications released from 1998 onwards are available on the ABS web site <www.abs.gov.au> (charges apply).

Directory of Tourism Statistics, 2001 cat. no. 1130.0 (irregular)

Overseas Arrivals and Departures, Australia cat. no. 3401.0 (issued monthly)

Short-term Visitor Arrivals Estimates, Australia cat. no. 3401.0.55.001 (issued monthly)

Tourism Indicators, Australia cat. no. 8634.0 (discontinued from September quarter 2002 - previously issued quarterly)

Electronic release Tourist Accommodation, Small Area Data cat. no. 8635.n.55.001 (data cubes for each state/territory - issued quarterly).

24 Current publications and other products released by the ABS are listed in the *Catalogue of Publications and Products* (cat. no. 1101.0). The catalogue is available from any ABS office or the ABS web site <www.abs.gov.au>. The ABS also issues a daily Release Advice on the web site which details products to be released in the week ahead.

ABS DATA AVAILABLE ON REQUEST

25 As well as the statistics included in this publication, the ABS has other relevant data available on request. Inquiries should be made to the National Information and Referral Service on 1300 135 070.

APPENDIX 1 BREAK IN TIME SERIES

INTRODUCTION

1 The Survey of Tourist Accommodation (STA) frame is based on an electronic file supplied each quarter by AAA Tourism. Since December 2002, AAA Tourism have been more active in maintaining their listing of accommodation establishments on this electronic file.

2 This active maintenance has resulted in a large number of hotels, motels and guest houses and serviced apartments being identified for the first time in both the March quarter 2003 and the June quarter 2003. While these establishments were identified in these quarters, they actually commenced operations prior to these time periods. The number of establishments identified in the March quarter was 115 and in the June quarter 17 (132 in total).

3 These additional 132 establishments were added to the STA frame in the June quarter 2003. The addition of these 132 establishments added \$31.9 million (2.7%) to the total takings from accommodation for the June quarter, 285,689 room nights occupied (2.8%) and 5,918 guest rooms available (2.9%).

4 The most significant impact was in serviced apartments, which added \$18.6 million to total takings. This is 1.6% of the total accommodation takings for the June quarter 2003 and 7.3% of takings from serviced apartments. Serviced apartments also contributed 164,274 room nights occupied. This was 1.6% of the total room nights occupied for the June quarter 2003 and 7.8% of room nights occupied in serviced apartments.

5 The addition of the 132 tourism establishments resulted in a break in time series between the March and June quarters 2003. The impact of the break in time series is explained below.

THE IMPACT OF THE BREAK

6 The extent of the impact varies by geographic region. As can be seen in the table below the major additions occurred in New South Wales, Victoria and Queensland and within those states/territories for serviced apartments.

TABLE 1: NUMBER OF ESTABLISHMENTS ADDED AS A RESULT OF FRAME MAINTENANCE, State/territory, June quarter 2003

	<i>Hotels</i>	<i>Motels and guest houses</i>	<i>Serviced apartments</i>	<i>Total</i>
New South Wales	2	15	27	44
Victoria	3	8	17	28
Queensland	3	10	25	38
South Australia	1	1	3	5
Western Australia	1	4	6	11
Tasmania	1	1	1	3
Northern Territory	1	—	1	2
Australian Capital Territory	1	—	—	1
Australia	13	39	80	132

— nil or rounded to zero (including null cells)

7 The effect of the break in series on key data items for the separate activity types of hotels, motels and guest houses and serviced apartments is shown in the following tables. Some information is suppressed due to confidentiality.

8 Table 2 shows that 1,058 additional guest rooms were added to hotels in Australia in June quarter 2003. This was 1.4% of the 78,089 hotel rooms in Australia. The most significant addition was for serviced apartments with 3,262 guest rooms added, which was 8.3% of total serviced apartments rooms available.

APPENDIX 1 BREAK IN TIME SERIES *continued*

TABLE 2: CONTRIBUTION OF ADDITIONAL ESTABLISHMENTS TO ACTIVITY, Australia, June quarter 2003

	GUEST ROOMS (NO.)			ROOM NIGHTS OCCUPIED ('000)			TAKINGS FROM ACCOMMODATION (\$'000)		
	Total(a)	Additional	% of total	Total(a)	Additional	% of total	Total(a)	Additional	% of total
	Hotels	78 089	1 058	1.4	4 109.4	49.7	1.2	553 849	6 992
Motels and guest houses	85 148	1 598	1.9	3 954.8	71.8	1.8	351 004	6 224	1.8
Serviced apartments	39 182	3 262	8.3	2 119.6	164.3	7.8	254 647	18 634	7.3
Australia	202 419	5 918	2.9	10 183.8	285.7	2.8	1 159 500	31 850	2.7

(a) Includes contribution of additional establishments.

THE IMPACT OF THE BREAK

continued

9 Table 3 shows that New South Wales had \$9.4 million added to total takings for hotels, motels and guest houses and serviced apartments combined. This was 2.5% of the total takings for New South Wales. Overall, the additional 132 establishments added \$31.9 million (2.7%) to total takings from accommodation for Australia.

TABLE 3: CONTRIBUTION OF ADDITIONAL ESTABLISHMENTS TO SELECTED DATA ITEMS, Hotels, motels and guest houses and serviced apartments, State/territory, June quarter 2003

	GUEST ROOMS (NO.)			ROOM NIGHTS OCCUPIED ('000)			TAKINGS FROM ACCOMMODATION (\$'000)		
	Total(a)	Additional	% of total	Total(a)	Additional	% of total	Total(a)	Additional	% of total
	New South Wales	63 782	1 657	2.6	3 215.5	79.0	2.5	381 533	9 377
Victoria	34 902	1 436	4.1	1 695.2	70.9	4.2	206 134	8 411	4.1
Queensland	54 539	1 816	3.3	2 846.9	93.8	3.3	313 207	9 172	2.9
South Australia	11 764	270	2.3	560.9	11.7	2.1	56 754	1 581	2.8
Western Australia	19 989	490	2.5	987.8	19.0	1.9	104 182	2 058	2.0
Tasmania(b)	6 005	n.p.	n.p.	279.0	n.p.	n.p.	28 712	n.p.	n.p.
Northern Territory(b)	6 383	n.p.	n.p.	306.5	n.p.	n.p.	36 241	n.p.	n.p.
Australian Capital Territory(b)	5 055	n.p.	n.p.	292.0	n.p.	n.p.	32 736	n.p.	n.p.
Australia	202 419	5 918	2.9	10 183.8	285.7	2.8	1 159 500	31 850	2.7

(a) Includes contribution of additional establishments.

(b) Suppressed due to confidentiality

10 Table 5 in Appendix 2 shows how the 132 establishments which were added to June quarter 2003 were distributed at the Tourism Region level. Also supplied is the AAA Tourism count of rooms available.

11 Where releasable, the contribution of the 132 establishments to key data items at the Tourism Region level is shown in Tables 6 to 12 in Appendix 2. These tables present factors which can be used to take into account the break in series.

12 Some factors are suppressed due to confidentiality. In these cases the number of rooms available information shown in Table 5 in Appendix 2 will provide an indication of the significance of the change.

13 Almost all SLAs have had less than three establishments added, therefore most factors at this level are confidential. Releasable factors for six SLAs are contained in Table 13 in Appendix 2. Factors for these SLAs are only available for hotels, motels and guest houses and serviced apartments combined.

DERIVED ITEMS

14 A number of STA data items are calculated by the ABS after data has been collected from providers. These items are derived by dividing one collected data item into another. The data items are:

- Bed occupancy rate

APPENDIX 1 BREAK IN TIME SERIES *continued*

DERIVED ITEMS *continued*

- Room occupancy rate
- Average takings per room night occupied
- Average takings per room night available
- Average length of stay

15 Both the numerator and denominator used to calculate these items have been affected by the additional 132 establishments to a similar extent. Therefore the addition of the 132 establishments has a minimal effect on the calculation of these data items. Thus a break in series is not likely to have occurred for the derived data items.

PERCENTAGE CHANGES

16 The addition of the 132 establishments increased the level of the series from the June quarter 2003. When calculating percentage changes over time care needs to be taken to ensure the effect of the break in series is taken into account.

17 Tables 6 to 14 in Appendix 2 contain factors for use when calculating percentage changes. These factors were calculated by dividing June quarter 2003 figures including the 132 additional establishments, by the June quarter 2003 figures excluding the additional establishments. These factors adjust the level of the series prior to June quarter 2003 to take account of the missing 132 establishments.

18 Care should be taken when calculating percentage changes as not all 132 additional establishments may have been open in the quarter to which the factor is being applied. By using the factor to add the 132 establishments to the data, the estimate may be increased to a figure which is more than it should be. This will result in the percentage change between that quarter and June quarter 2003 being under-estimated.

19 Users should contact the Transport and Tourism Business Statistics Centre for further information on the contribution of the additional establishments to earlier quarters.

20 The method for calculating the percentage change is shown by the example below. Takings from accommodation data can be found in Tables 1 and 2 of this publication. Factors for original data can be found in Table 12 in Appendix 2. Seasonally adjusted and trend factors are contained in Table 14 in Appendix 2.

TABLE 4: TOTAL TAKINGS FROM ACCOMMODATION, Hotels, motels and guest houses and serviced apartments, Australia

	<i>Original</i>	<i>Seasonally Adjusted</i>	<i>Trend</i>
	\$'000	\$'000	\$'000
December quarter 2002	1 314 053	1 245 637	1 221 651
March quarter 2003	1 244 695	1 239 822	1 229 687
June quarter 2003	1 159 500	1 268 874	1 294 322
September quarter 2003	1 373 488	1 341 249	1 342 248
December quarter 2003	1 499 344	1 421 472	1 399 262
Factors	1.02824	1.02997	1.02997

Original data

21 To calculate the percentage change between December quarter 2002 and December quarter 2003 for takings from accommodation the following steps are undertaken:

22 Step 1:

Multiply the December quarter 2002 figure by the appropriate factor to obtain an adjusted December quarter 2002 figure

$$\$1,314,053 \times 1.02824 = \$1,351,162$$

APPENDIX 1 BREAK IN TIME SERIES *continued*

Original data continued

23 Step 2:

Calculate the percentage change in the usual manner except in this case use the adjusted December quarter 2002 figure

$$(\$1,499,344 / \$1,351,162 - 1) \times 100 = 11.0\%$$

24 This same methodology applies for all calculations of percentage changes that cross the break in series (ie June quarter 2003). Factors are not needed when calculating percentage changes before the break in series.

Seasonally Adjusted and Trend Estimates

25 Seasonally adjusted and trend estimates are subject to the same break in series. Care should be taken when calculating percentage changes to ensure the effect of the break in series is taken into account. The same methodology as described above should be applied to these data to calculate percentage changes, although a different factor should be used. These factors are contained in Table 14 in Appendix 2.

26 Note that seasonally adjusted and trend estimates are only produced for the data items of takings from accommodation and room occupancy rate. As the break in series does not impact on derived data items, the factors in Table 14 in Appendix 2 need only be applied to takings from accommodation.

Monthly data

27 The additional 132 establishments have been added into each month of the June quarter 2003 (ie April, May, June). Therefore the break in series has occurred between the months of March and April 2003. When calculating percentage changes, the appropriate quarterly factor should be used to adjust monthly data in respect of the break in series.

28 Users should contact the Transport and Tourism Business Statistics Centre if they have any queries on the break in series.

TABLES

29 Appendix 2 which follows contains tables for use when calculating percentage changes:

- Table 5 shows the geographic distribution of the additional 132 establishments
- Tables 6 - 14 contains factors for use when calculating percentage changes.

APPENDIX 2 FACTOR TABLES

TABLE 5: ESTABLISHMENTS ADDED IN JUNE QUARTER 2003

	HOTELS		MOTELS AND GUEST HOUSES		SERVICED APARTMENTS		TOTAL	
	Establish- ment count	AAAT room count	Establish- ment count	AAAT room count	Establish- ment count	AAAT room count	Establish- ment count	AAAT room count
<i>Tourism Region</i>								
<i>New South Wales</i>								
South Coast	—	—	—	—	1	33	1	33
Sydney	1	20	5	213	10	393	16	626
Snowy Mountains	—	—	1	22	—	—	1	22
The Murray	—	—	1	16	—	—	1	16
Riverina	—	—	1	46	—	—	1	46
Explorer Country	—	—	2	39	—	—	2	39
Hunter	1	175	1	97	1	20	3	292
North Coast NSW	—	—	—	—	8	222	8	222
Northern Rivers Tropical NSW	—	—	1	22	6	192	7	214
New England North West	—	—	3	216	—	—	3	216
Central Coast	—	—	—	—	1	20	1	20
Total	2	195	15	671	27	880	44	1 746
<i>Victoria</i>								
Melbourne	3	373	4	400	11	386	18	1 159
Western	—	—	—	—	1	17	1	17
Bendigo Loddon	—	—	1	31	—	—	1	31
Peninsula	—	—	2	40	—	—	2	40
Goulburn	—	—	1	26	—	—	1	26
High Country	—	—	—	—	3	81	3	81
Lakes	—	—	—	—	1	18	1	18
Geelong	—	—	—	—	1	16	1	16
Total	3	373	8	497	17	518	28	1 388
<i>Queensland</i>								
Gold Coast	—	—	—	—	9	723	9	723
Brisbane	—	—	1	25	1	41	2	66
Sunshine Coast	—	—	—	—	1	124	1	124
Hervey Bay/Maryborough	—	—	1	23	1	20	2	43
Darling Downs	—	—	1	15	—	—	1	15
Bundaberg	1	26	—	—	—	—	1	26
Fitzroy	—	—	1	25	—	—	1	25
Mackay	—	—	2	68	—	—	2	68
Northern	1	29	1	28	1	140	3	197
Tropical North Queensland	1	25	2	57	12	579	15	661
Outback	—	—	1	19	—	—	1	19
Total	3	80	10	260	25	1 627	38	1 967
<i>South Australia</i>								
Fleurieu Peninsula	—	—	1	43	1	15	2	58
Adelaide	1	171	—	—	1	17	2	188
Eyre Peninsula	—	—	—	—	1	25	1	25
Total	1	171	1	43	3	57	5	271
<i>Western Australia</i>								
South East	—	—	—	—	1	15	1	15
Pilbara	—	—	2	116	—	—	2	116
Perth	—	—	1	18	3	164	4	182
South West	1	88	1	20	1	48	3	156
Great Southern	—	—	—	—	1	25	1	25
Total	1	88	4	154	6	252	11	494
<i>Tasmania</i>								
Greater Hobart	—	—	—	—	1	25	1	25
North West	1	60	—	—	—	—	1	60
West Coast	—	—	1	28	—	—	1	28
Total	1	60	1	28	1	25	3	113

— nil or rounded to zero (including null cells)

APPENDIX 2 FACTOR TABLES *continued*

TABLE 5: ESTABLISHMENTS ADDED IN JUNE QUARTER 2003 *continued*

	HOTELS		MOTELS AND GUEST HOUSES		SERVICED APARTMENTS		TOTAL	
	<i>Establish- ment count</i>	<i>AAAT room count</i>	<i>Establish- ment count</i>	<i>AAAT room count</i>	<i>Establish- ment count</i>	<i>AAAT room count</i>	<i>Establish- ment count</i>	<i>AAAT room count</i>
<i>Tourism Region</i>								
Northern Territory								
Katherine	1	38	—	—	—	—	1	38
Alice Springs	—	—	—	—	1	34	1	34
Total	1	38	—	—	1	34	2	72
Australian Capital Territory								
Total	1	58	—	—	—	—	1	58
AUSTRALIA	13	1 063	39	1 653	80	3 393	132	6 109

— nil or rounded to zero (including null cells)

APPENDIX 2 FACTOR TABLES *continued*

TABLE 6: GUEST ROOMS FACTORS (a)(b)

<i>Tourism Region</i>	<i>Hotels</i>	<i>Motels and guest houses</i>	<i>Serviced Apartments</i>	<i>Total</i>
New South Wales				
South Coast	1.00000	1.00000	n.p.	n.p.
Sydney	n.p.	1.03042	1.09062	1.02125
Snowy Mountains	1.00000	n.p.	1.00000	n.p.
The Murray	1.00000	n.p.	1.00000	n.p.
Riverina	1.00000	n.p.	1.00000	n.p.
Explorer Country	1.00000	n.p.	1.00000	n.p.
Hunter	n.p.	n.p.	n.p.	n.p.
North Coast NSW	1.00000	1.00000	1.36892	1.05862
Northern Rivers Tropical NSW	1.00000	n.p.	1.43669	1.09091
New England North West	1.00000	1.05444	1.00000	1.04933
Central Coast	1.00000	1.00000	n.p.	n.p.
Total	1.00862	1.01799	1.12137	1.02667
Victoria				
Melbourne	1.03473	1.08597	1.09798	1.06117
Western	1.00000	1.00000	n.p.	n.p.
Bendigo Loddon	1.00000	n.p.	1.00000	n.p.
Peninsula	1.00000	n.p.	1.00000	n.p.
Goulburn	1.00000	n.p.	1.00000	n.p.
High Country	1.00000	1.00000	n.p.	n.p.
Lakes	1.00000	1.00000	n.p.	n.p.
Geelong	1.00000	1.00000	n.p.	n.p.
Total	1.02887	1.03177	1.11276	1.04291
Queensland				
Gold Coast	1.00000	1.00000	1.14435	1.05225
Brisbane	1.00000	n.p.	n.p.	n.p.
Sunshine Coast	1.00000	1.00000	n.p.	n.p.
Hervey Bay/Maryborough	1.00000	n.p.	n.p.	n.p.
Darling Downs	1.00000	n.p.	1.00000	n.p.
Bundaberg	n.p.	1.00000	1.00000	n.p.
Fitzroy	1.00000	n.p.	1.00000	n.p.
Mackay	1.00000	n.p.	1.00000	n.p.
Northern	n.p.	n.p.	n.p.	n.p.
Tropical North Queensland	n.p.	n.p.	1.25170	1.06057
Outback	1.00000	n.p.	1.00000	n.p.
Total	1.00383	1.01557	1.10410	1.03443
South Australia				
Fleurieu Peninsula	1.00000	n.p.	n.p.	n.p.
Adelaide	n.p.	1.00000	n.p.	n.p.
Eyre Peninsula	1.00000	1.00000	n.p.	n.p.
Total	n.p.	n.p.	1.03576	1.02354
Western Australia				
South East	1.00000	1.00000	n.p.	n.p.
Pilbara	1.00000	n.p.	1.00000	n.p.
Perth	1.00000	n.p.	1.07292	1.01810
South West	n.p.	n.p.	n.p.	n.p.
Great Southern	1.00000	1.00000	n.p.	n.p.
Total	n.p.	1.03044	1.05458	1.02513
Tasmania				
Greater Hobart	1.00000	1.00000	n.p.	n.p.
North West	n.p.	1.00000	1.00000	n.p.
West Coast	1.00000	n.p.	1.00000	n.p.
Total	n.p.	n.p.	n.p.	n.p.

(a) A factor of 1.00000 denotes no additional establishments have been added to the Tourism Region

(b) n.p. denotes not available for publication due to confidentiality but included in totals where applicable

APPENDIX 2 FACTOR TABLES *continued*

TABLE 6: GUEST ROOMS FACTORS (a)(b) *continued*

<i>Tourism Region</i>	<i>Hotels</i>	<i>Motels and guest houses</i>	<i>Serviced Apartments</i>	<i>Total</i>
Northern Territory				
Katherine	n.p.	1.00000	1.00000	n.p.
Alice Springs	1.00000	1.00000	n.p.	n.p.
Total	n.p.	1.00000	n.p.	n.p.
Australian Capital Territory	n.p.	1.00000	1.00000	n.p.
Australia	1.01373	1.01913	1.09081	1.03012

- (a) A factor of 1.00000 denotes no additional establishments have been added to the Tourism Region
- (b) n.p. denotes not available for publication due to confidentiality but included in totals where applicable

APPENDIX 2 FACTOR TABLES *continued*

TABLE 7: BED SPACES FACTORS (a)(b)

<i>Tourism Region</i>	<i>Hotels</i>	<i>Motels and guest houses</i>	<i>Serviced Apartments</i>	<i>Total</i>
New South Wales				
South Coast	1.00000	1.00000	n.p.	n.p.
Sydney	n.p.	1.03076	1.08898	1.02326
Snowy Mountains	1.00000	n.p.	1.00000	n.p.
The Murray	1.00000	n.p.	1.00000	n.p.
Riverina	1.00000	n.p.	1.00000	n.p.
Explorer Country	1.00000	n.p.	1.00000	n.p.
Hunter	n.p.	n.p.	n.p.	n.p.
North Coast NSW	1.00000	1.00000	1.47689	1.07298
Northern Rivers Tropical NSW	1.00000	n.p.	1.48958	1.11195
New England North West	1.00000	1.03348	1.00000	1.03045
Central Coast	1.00000	1.00000	n.p.	n.p.
Total	1.00700	1.01567	1.13098	1.02807
Victoria				
Melbourne	1.03438	1.11080	1.12339	1.07783
Western	1.00000	1.00000	n.p.	n.p.
Bendigo Loddon	1.00000	n.p.	1.00000	n.p.
Peninsula	1.00000	n.p.	1.00000	n.p.
Goulburn	1.00000	n.p.	1.00000	n.p.
High Country	1.00000	1.00000	n.p.	n.p.
Lakes	1.00000	1.00000	n.p.	n.p.
Geelong	1.00000	1.00000	n.p.	n.p.
Total	1.02713	1.03601	1.13663	1.05015
Queensland				
Gold Coast	1.00000	1.00000	1.12438	1.04502
Brisbane	1.00000	n.p.	n.p.	n.p.
Sunshine Coast	1.00000	1.00000	n.p.	n.p.
Hervey Bay/Maryborough	1.00000	n.p.	n.p.	n.p.
Darling Downs	1.00000	n.p.	1.00000	n.p.
Bundaberg	n.p.	1.00000	1.00000	n.p.
Fitzroy	1.00000	n.p.	1.00000	n.p.
Mackay	1.00000	n.p.	1.00000	n.p.
Northern	n.p.	n.p.	n.p.	n.p.
Tropical North Queensland	n.p.	n.p.	1.21472	1.05955
Outback	1.00000	n.p.	1.00000	n.p.
Total	1.00365	1.01440	1.09285	1.03273
South Australia				
Fleurieu Peninsula	1.00000	n.p.	n.p.	n.p.
Adelaide	n.p.	1.00000	n.p.	n.p.
Eyre Peninsula	1.00000	1.00000	n.p.	n.p.
Total	n.p.	n.p.	1.03415	1.02298
Western Australia				
South East	1.00000	1.00000	n.p.	n.p.
Pilbara	1.00000	n.p.	1.00000	n.p.
Perth	1.00000	n.p.	1.06176	1.01897
South West	n.p.	n.p.	n.p.	n.p.
Great Southern	1.00000	1.00000	n.p.	n.p.
Total	n.p.	1.02133	1.05477	1.02759
Tasmania				
Greater Hobart	1.00000	1.00000	n.p.	n.p.
North West	n.p.	1.00000	1.00000	n.p.
West Coast	1.00000	n.p.	1.00000	n.p.
Total	n.p.	n.p.	n.p.	n.p.

(a) A factor of 1.00000 denotes no additional establishments have been added to the Tourism Region

(b) n.p. denotes not available for publication due to confidentiality but included in totals where applicable

APPENDIX 2 FACTOR TABLES *continued*

TABLE 7: BED SPACES FACTORS (a)(b) *continued*

<i>Tourism Region</i>	<i>Hotels</i>	<i>Motels and guest houses</i>	<i>Serviced Apartments</i>	<i>Total</i>
Northern Territory				
Katherine	n.p.	1.00000	1.00000	n.p.
Alice Springs	1.00000	1.00000	n.p.	n.p.
Total	n.p.	1.00000	n.p.	n.p.
Australian Capital Territory	n.p.	1.00000	1.00000	n.p.
Australia	1.01320	1.01813	1.09012	1.03139

- (a) A factor of 1.00000 denotes no additional establishments have been added to the Tourism Region
- (b) n.p. denotes not available for publication due to confidentiality but included in totals where applicable

APPENDIX 2 FACTOR TABLES *continued*

TABLE 8: PERSONS EMPLOYED FACTORS (a)(b)

<i>Tourism Region</i>	<i>Hotels</i>	<i>Motels and guest houses</i>	<i>Serviced Apartments</i>	<i>Total</i>
New South Wales				
South Coast	1.00000	1.00000	n.p.	n.p.
Sydney	n.p.	1.01306	1.10443	1.00800
Snowy Mountains	1.00000	n.p.	1.00000	n.p.
The Murray	1.00000	n.p.	1.00000	n.p.
Riverina	1.00000	n.p.	1.00000	n.p.
Explorer Country	1.00000	n.p.	1.00000	n.p.
Hunter	n.p.	n.p.	n.p.	n.p.
North Coast NSW	1.00000	1.00000	1.10973	1.02750
Northern Rivers Tropical NSW	1.00000	n.p.	1.25517	1.06042
New England North West	1.00000	1.02125	1.00000	1.01914
Central Coast	1.00000	1.00000	n.p.	n.p.
Total	1.00111	1.00902	1.08806	1.01062
Victoria				
Melbourne	1.01454	1.02957	1.06250	1.02077
Western	1.00000	1.00000	n.p.	n.p.
Bendigo Loddon	1.00000	n.p.	1.00000	n.p.
Peninsula	1.00000	n.p.	1.00000	n.p.
Goulburn	1.00000	n.p.	1.00000	n.p.
High Country	1.00000	1.00000	n.p.	n.p.
Lakes	1.00000	1.00000	n.p.	n.p.
Geelong	1.00000	1.00000	n.p.	n.p.
Total	1.01241	1.01386	1.07766	1.01804
Queensland				
Gold Coast	1.00000	1.00000	1.03509	1.00503
Brisbane	1.00000	n.p.	n.p.	n.p.
Sunshine Coast	1.00000	1.00000	n.p.	n.p.
Hervey Bay/Maryborough	1.00000	n.p.	n.p.	n.p.
Darling Downs	1.00000	n.p.	1.00000	n.p.
Bundaberg	n.p.	1.00000	1.00000	n.p.
Fitzroy	1.00000	n.p.	1.00000	n.p.
Mackay	1.00000	n.p.	1.00000	n.p.
Northern	n.p.	n.p.	n.p.	n.p.
Tropical North Queensland	n.p.	n.p.	1.18929	1.03499
Outback	1.00000	n.p.	1.00000	n.p.
Total	1.00101	1.01200	1.05270	1.01069
South Australia				
Fleurieu Peninsula	1.00000	n.p.	n.p.	n.p.
Adelaide	n.p.	1.00000	n.p.	n.p.
Eyre Peninsula	1.00000	1.00000	n.p.	n.p.
Total	n.p.	n.p.	1.06993	1.01746
Western Australia				
South East	1.00000	1.00000	n.p.	n.p.
Pilbara	1.00000	n.p.	1.00000	n.p.
Perth	1.00000	n.p.	1.03017	1.00486
South West	n.p.	n.p.	n.p.	n.p.
Great Southern	1.00000	1.00000	n.p.	n.p.
Total	n.p.	1.01422	1.03092	1.00999
Tasmania				
Greater Hobart	1.00000	1.00000	n.p.	n.p.
North West	n.p.	1.00000	1.00000	n.p.
West Coast	1.00000	n.p.	1.00000	n.p.
Total	n.p.	n.p.	n.p.	n.p.

(a) A factor of 1.00000 denotes no additional establishments have been added to the Tourism Region

(b) n.p. denotes not available for publication due to confidentiality but included in totals where applicable

APPENDIX 2 FACTOR TABLES *continued*

TABLE 8: PERSONS EMPLOYED FACTORS (a)(b) *continued*

<i>Tourism Region</i>	<i>Hotels</i>	<i>Motels and guest houses</i>	<i>Serviced Apartments</i>	<i>Total</i>
Northern Territory				
Katherine	n.p.	1.00000	1.00000	n.p.
Alice Springs	1.00000	1.00000	n.p.	n.p.
Total	n.p.	1.00000	n.p.	n.p.
Australian Capital Territory	n.p.	1.00000	1.00000	n.p.
Australia	1.00450	1.01126	1.05647	1.01207

- (a) A factor of 1.00000 denotes no additional establishments have been added to the Tourism Region
- (b) n.p. denotes not available for publication due to confidentiality but included in totals where applicable

APPENDIX 2 FACTOR TABLES *continued*

TABLE 9: ROOM NIGHTS OCCUPIED FACTORS (a)(b)

<i>Tourism Region</i>	<i>Hotels</i>	<i>Motels and guest houses</i>	<i>Serviced Apartments</i>	<i>Total</i>
New South Wales				
South Coast	1.00000	1.00000	n.p.	n.p.
Sydney	n.p.	1.02495	1.08158	1.01869
Snowy Mountains	1.00000	n.p.	1.00000	n.p.
The Murray	1.00000	n.p.	1.00000	n.p.
Riverina	1.00000	n.p.	1.00000	n.p.
Explorer Country	1.00000	n.p.	1.00000	n.p.
Hunter	n.p.	n.p.	n.p.	n.p.
North Coast NSW	1.00000	1.00000	1.31566	1.05971
Northern Rivers Tropical NSW	1.00000	n.p.	1.43947	1.08813
New England North West	1.00000	1.04389	1.00000	1.04040
Central Coast	1.00000	1.00000	n.p.	n.p.
Total	1.00611	1.01782	1.11193	1.02519
Victoria				
Melbourne	1.03228	1.10094	1.09185	1.06067
Western	1.00000	1.00000	n.p.	n.p.
Bendigo Loddon	1.00000	n.p.	1.00000	n.p.
Peninsula	1.00000	n.p.	1.00000	n.p.
Goulburn	1.00000	n.p.	1.00000	n.p.
High Country	1.00000	1.00000	n.p.	n.p.
Lakes	1.00000	1.00000	n.p.	n.p.
Geelong	1.00000	1.00000	n.p.	n.p.
Total	1.02859	1.03647	1.09458	1.04364
Queensland				
Gold Coast	1.00000	1.00000	1.13491	1.05282
Brisbane	1.00000	n.p.	n.p.	n.p.
Sunshine Coast	1.00000	1.00000	n.p.	n.p.
Hervey Bay/Maryborough	1.00000	n.p.	n.p.	n.p.
Darling Downs	1.00000	n.p.	1.00000	n.p.
Bundaberg	n.p.	1.00000	1.00000	n.p.
Fitzroy	1.00000	n.p.	1.00000	n.p.
Mackay	1.00000	n.p.	1.00000	n.p.
Northern	n.p.	n.p.	n.p.	n.p.
Tropical North Queensland	n.p.	n.p.	1.27062	1.06218
Outback	1.00000	n.p.	1.00000	n.p.
Total	1.00435	1.01544	1.10036	1.03406
South Australia				
Fleurieu Peninsula	1.00000	n.p.	n.p.	n.p.
Adelaide	n.p.	1.00000	n.p.	n.p.
Eyre Peninsula	1.00000	1.00000	n.p.	n.p.
Total	n.p.	n.p.	1.03293	1.02136
Western Australia				
South East	1.00000	1.00000	n.p.	n.p.
Pilbara	1.00000	n.p.	1.00000	n.p.
Perth	1.00000	n.p.	1.07897	1.01741
South West	n.p.	n.p.	n.p.	n.p.
Great Southern	1.00000	1.00000	n.p.	n.p.
Total	n.p.	1.01823	1.05013	1.01960
Tasmania				
Greater Hobart	1.00000	1.00000	n.p.	n.p.
North West	n.p.	1.00000	1.00000	n.p.
West Coast	1.00000	n.p.	1.00000	n.p.
Total	n.p.	n.p.	n.p.	n.p.

(a) A factor of 1.00000 denotes no additional establishments have been added to the Tourism Region

(b) n.p. denotes not available for publication due to confidentiality but included in totals where applicable

APPENDIX 2 FACTOR TABLES *continued*

TABLE 9: ROOM NIGHTS OCCUPIED FACTORS (a)(b) *continued*

<i>Tourism Region</i>	<i>Hotels</i>	<i>Motels and guest houses</i>	<i>Serviced Apartments</i>	<i>Total</i>
Northern Territory				
Katherine	n.p.	1.00000	1.00000	n.p.
Alice Springs	1.00000	1.00000	n.p.	n.p.
Total	n.p.	1.00000	n.p.	n.p.
Australian Capital Territory	n.p.	1.00000	1.00000	n.p.
Australia	1.01223	1.01848	1.08401	1.02886

- (a) A factor of 1.00000 denotes no additional establishments have been added to the Tourism Region
- (b) n.p. denotes not available for publication due to confidentiality but included in totals where applicable

APPENDIX 2 FACTOR TABLES *continued*

TABLE 10: GUEST NIGHTS FACTORS (a)(b)

<i>Tourism Region</i>	<i>Hotels</i>	<i>Motels and guest houses</i>	<i>Serviced Apartments</i>	<i>Total</i>
New South Wales				
South Coast	1.00000	1.00000	n.p.	n.p.
Sydney	n.p.	1.02517	1.07455	1.01957
Snowy Mountains	1.00000	n.p.	1.00000	n.p.
The Murray	1.00000	n.p.	1.00000	n.p.
Riverina	1.00000	n.p.	1.00000	n.p.
Explorer Country	1.00000	n.p.	1.00000	n.p.
Hunter	n.p.	n.p.	n.p.	n.p.
North Coast NSW	1.00000	1.00000	1.39858	1.08647
Northern Rivers Tropical NSW	1.00000	n.p.	1.50294	1.11486
New England North West	1.00000	1.04260	1.00000	1.03924
Central Coast	1.00000	1.00000	n.p.	n.p.
Total	1.07770	1.01661	1.12494	1.02943
Victoria				
Melbourne	1.03135	1.10794	1.09291	1.06420
Western	1.00000	1.00000	n.p.	n.p.
Bendigo Loddon	1.00000	n.p.	1.00000	n.p.
Peninsula	1.00000	n.p.	1.00000	n.p.
Goulburn	1.00000	n.p.	1.00000	n.p.
High Country	1.00000	1.00000	n.p.	n.p.
Lakes	1.00000	1.00000	n.p.	n.p.
Geelong	1.00000	1.00000	n.p.	n.p.
Total	1.02754	1.03755	1.09914	1.04637
Queensland				
Gold Coast	1.00000	1.00000	1.14787	1.06839
Brisbane	1.00000	n.p.	n.p.	n.p.
Sunshine Coast	1.00000	1.00000	n.p.	n.p.
Hervey Bay/Maryborough	1.00000	n.p.	n.p.	n.p.
Darling Downs	1.00000	n.p.	1.00000	n.p.
Bundaberg	n.p.	1.00000	1.00000	n.p.
Fitzroy	1.00000	n.p.	1.00000	n.p.
Mackay	1.00000	n.p.	1.00000	n.p.
Northern	n.p.	n.p.	n.p.	n.p.
Tropical North Queensland	n.p.	n.p.	1.25676	1.06971
Outback	1.00000	n.p.	1.00000	n.p.
Total	1.00493	1.01250	1.10393	1.04016
South Australia				
Fleurieu Peninsula	1.00000	n.p.	n.p.	n.p.
Adelaide	n.p.	1.00000	n.p.	n.p.
Eyre Peninsula	1.00000	1.00000	n.p.	n.p.
Total	n.p.	n.p.	1.03606	1.02477
Western Australia				
South East	1.00000	1.00000	n.p.	n.p.
Pilbara	1.00000	n.p.	1.00000	n.p.
Perth	1.00000	n.p.	1.08787	1.02403
South West	n.p.	n.p.	n.p.	n.p.
Great Southern	1.00000	1.00000	n.p.	n.p.
Total	n.p.	1.01724	1.05648	1.02819
Tasmania				
Greater Hobart	1.00000	1.00000	n.p.	n.p.
North West	n.p.	1.00000	1.00000	n.p.
West Coast	1.00000	n.p.	1.00000	n.p.
Total	n.p.	n.p.	n.p.	n.p.

(a) A factor of 1.00000 denotes no additional establishments have been added to the Tourism Region

(b) n.p. denotes not available for publication due to confidentiality but included in totals where applicable

APPENDIX 2 FACTOR TABLES *continued*

TABLE 10: GUEST NIGHTS FACTORS (a)(b) *continued*

<i>Tourism Region</i>	<i>Hotels</i>	<i>Motels and guest houses</i>	<i>Serviced Apartments</i>	<i>Total</i>
Northern Territory				
Katherine	n.p.	1.00000	1.00000	n.p.
Alice Springs	1.00000	1.00000	n.p.	n.p.
Total	n.p.	1.00000	n.p.	n.p.
Australian Capital Territory	n.p.	1.00000	1.00000	n.p.
Australia	1.01376	1.01748	1.09028	1.03362

- (a) A factor of 1.00000 denotes no additional establishments have been added to the Tourism Region
- (b) n.p. denotes not available for publication due to confidentiality but included in totals where applicable

APPENDIX 2 FACTOR TABLES *continued*

TABLE 11: GUEST ARRIVALS FACTORS (a)(b)

<i>Tourism Region</i>	<i>Hotel</i>	<i>Motel</i>	<i>Serviced Apartments</i>	<i>Total</i>
New South Wales				
South Coast	1.00000	1.00000	n.p.	n.p.
Sydney	n.p.	1.03469	1.11744	1.02394
Snowy Mountains	1.00000	n.p.	1.00000	n.p.
The Murray	1.00000	n.p.	1.00000	n.p.
Riverina	1.00000	n.p.	1.00000	n.p.
Explorer Country	1.00000	n.p.	1.00000	n.p.
Hunter	n.p.	n.p.	n.p.	n.p.
North Coast NSW	1.00000	1.00000	1.37733	1.05311
Northern Rivers Tropical NSW	1.00000	n.p.	1.47041	1.08057
New England North West	1.00000	1.04314	1.00000	1.04075
Central Coast	1.00000	1.00000	n.p.	n.p.
Total	1.00923	1.01807	1.15372	1.02781
Victoria				
Melbourne	1.03072	1.09392	1.10614	1.06160
Western	1.00000	1.00000	n.p.	n.p.
Bendigo Loddon	1.00000	n.p.	1.00000	n.p.
Peninsula	1.00000	n.p.	1.00000	n.p.
Goulburn	1.00000	n.p.	1.00000	n.p.
High Country	1.00000	1.00000	n.p.	n.p.
Lakes	1.00000	1.00000	n.p.	n.p.
Geelong	1.00000	1.00000	n.p.	n.p.
Total	1.02623	1.03017	1.10770	1.03906
Queensland				
Gold Coast	1.00000	1.00000	1.12181	1.03864
Brisbane	1.00000	n.p.	n.p.	n.p.
Sunshine Coast	1.00000	1.00000	n.p.	n.p.
Hervey Bay/Maryborough	1.00000	n.p.	n.p.	n.p.
Darling Downs	1.00000	n.p.	1.00000	n.p.
Bundaberg	n.p.	1.00000	1.00000	n.p.
Fitzroy	1.00000	n.p.	1.00000	n.p.
Mackay	1.00000	n.p.	1.00000	n.p.
Northern	n.p.	n.p.	n.p.	n.p.
Tropical North Queensland	n.p.	n.p.	1.26131	1.04869
Outback	1.00000	n.p.	1.00000	n.p.
Total	1.00583	1.01336	1.08453	1.02624
South Australia				
Fleurieu Peninsula	1.00000	n.p.	n.p.	n.p.
Adelaide	n.p.	1.00000	n.p.	n.p.
Eyre Peninsula	1.00000	1.00000	n.p.	n.p.
Total	n.p.	n.p.	1.03963	1.02248
Western Australia				
South East	1.00000	1.00000	n.p.	n.p.
Pilbara	1.00000	n.p.	1.00000	n.p.
Perth	1.00000	n.p.	1.08096	1.01750
South West	n.p.	n.p.	n.p.	n.p.
Great Southern	1.00000	1.00000	n.p.	n.p.
Total	n.p.	1.01913	1.06341	1.02472
Tasmania				
Greater Hobart	1.00000	1.00000	n.p.	n.p.
North West	n.p.	1.00000	1.00000	n.p.
West Coast	1.00000	n.p.	1.00000	n.p.
Total	n.p.	n.p.	n.p.	n.p.

(a) A factor of 1.00000 denotes no additional establishments have been added to the Tourism Region

(b) n.p. denotes not available for publication due to confidentiality but included in totals where applicable

APPENDIX 2 FACTOR TABLES *continued*

TABLE 11: GUEST ARRIVALS FACTORS(a)(b) *continued*

<i>Tourism Region</i>	<i>Hotel</i>	<i>Motel</i>	<i>Serviced Apartments</i>	<i>Total</i>
Northern Territory				
Katherine	n.p.	1.00000	1.00000	n.p.
Alice Springs	1.00000	1.00000	n.p.	n.p.
Total	n.p.	1.00000	n.p.	n.p.
Australian Capital Territory	n.p.	1.00000	1.00000	n.p.
Australia	1.01533	1.01743	1.09065	1.02782

- (a) A factor of 1.00000 denotes no additional establishments have been added to the Tourism Region
- (b) n.p. denotes not available for publication due to confidentiality but included in totals where applicable

APPENDIX 2 FACTOR TABLES *continued*

TABLE 12: TAKINGS FROM ACCOMMODATION FACTORS (a)(b)

<i>Tourism Region</i>	<i>Hotels</i>	<i>Motels and guest houses</i>	<i>Serviced apartments</i>	<i>Total</i>
New South Wales				
South Coast	1.00000	1.00000	n.p.	n.p.
Sydney	n.p.	1.01788	1.08046	1.01691
Snowy Mountains	1.00000	n.p.	1.00000	n.p.
The Murray	1.00000	n.p.	1.00000	n.p.
Riverina	1.00000	n.p.	1.00000	n.p.
Explorer Country	1.00000	n.p.	1.00000	n.p.
Hunter	n.p.	n.p.	n.p.	n.p.
North Coast NSW	1.00000	1.00000	1.33416	1.07590
Northern Rivers Tropical NSW	1.00000	n.p.	1.44552	1.10924
New England North West	1.00000	1.03289	1.00000	1.03073
Central Coast	1.00000	1.00000	n.p.	n.p.
Total	1.00737	1.01577	1.10463	1.02520
Victoria				
Melbourne	1.03071	1.09527	1.08189	1.05274
Western	1.00000	1.00000	n.p.	n.p.
Bendigo Loddon	1.00000	n.p.	1.00000	n.p.
Peninsula	1.00000	n.p.	1.00000	n.p.
Goulburn	1.00000	n.p.	1.00000	n.p.
High Country	1.00000	1.00000	n.p.	n.p.
Lakes	1.00000	1.00000	n.p.	n.p.
Geelong	1.00000	1.00000	n.p.	n.p.
Total	1.02811	1.03707	1.08637	1.04254
Queensland				
Gold Coast	1.00000	1.00000	1.14485	1.04691
Brisbane	1.00000	n.p.	n.p.	n.p.
Sunshine Coast	1.00000	1.00000	n.p.	n.p.
Hervey Bay/Maryborough	1.00000	n.p.	n.p.	n.p.
Darling Downs	1.00000	n.p.	1.00000	n.p.
Bundaberg	n.p.	1.00000	1.00000	n.p.
Fitzroy	1.00000	n.p.	1.00000	n.p.
Mackay	1.00000	n.p.	1.00000	n.p.
Northern	n.p.	n.p.	n.p.	n.p.
Tropical North Queensland	n.p.	n.p.	1.23330	1.05282
Outback	1.00000	n.p.	1.00000	n.p.
Total	1.00353	1.01681	1.09383	1.03016
South Australia				
Fleurieu Peninsula	1.00000	n.p.	n.p.	n.p.
Adelaide	n.p.	1.00000	n.p.	n.p.
Eyre Peninsula	1.00000	1.00000	n.p.	n.p.
Total	n.p.	n.p.	1.03089	1.02870
Western Australia				
South East	1.00000	1.00000	n.p.	n.p.
Pilbara	1.00000	n.p.	1.00000	n.p.
Perth	1.00000	n.p.	1.06410	1.01432
South West	n.p.	n.p.	n.p.	n.p.
Great Southern	1.00000	1.00000	n.p.	n.p.
Total	n.p.	1.01551	1.04539	1.02015
Tasmania				
Greater Hobart	1.00000	1.00000	n.p.	n.p.
North West	n.p.	1.00000	1.00000	n.p.
West Coast	1.00000	n.p.	1.00000	n.p.
Total	n.p.	n.p.	n.p.	n.p.

(a) A factor of 1.00000 denotes no additional establishments have been added to the Tourism Region

(b) n.p. denotes not available for publication due to confidentiality but included in totals where applicable

APPENDIX 2 FACTOR TABLES *continued*

TABLE 12: TAKINGS FROM ACCOMMODATION FACTORS (a)(b) *continued*

<i>Tourism Region</i>	<i>Hotels</i>	<i>Motels and guest houses</i>		<i>Total</i>
		<i>houses</i>	<i>Serviced apartments</i>	
Northern Territory				
Katherine	n.p.	1.00000	1.00000	n.p.
Alice Springs	1.00000	1.00000	n.p.	n.p.
Total	n.p.	1.00000	n.p.	n.p.
Australian Capital Territory	n.p.	1.00000	1.00000	n.p.
Australia	1.01279	1.01805	1.07895	1.02824

(a) A factor of 1.00000 denotes no additional establishments have been added to the Tourism Region

(b) n.p. denotes not available for publication due to confidentiality but included in totals where applicable

TABLE 13: STATISTICAL LOCAL AREA FACTORS, Hotels, motels and guest houses and serviced apartments

<i>SLA</i>	<i>Guest rooms</i>	<i>Bed spaces</i>	<i>Persons employed</i>	<i>Room nights</i>	<i>Guest nights</i>	<i>Guest arrivals</i>	<i>Takings from accommodation</i>
				<i>occupied</i>			
South Sydney (C)	1.03353	1.02914	1.00781	1.02880	1.02744	1.03328	1.02353
Sydney (C) - Remainder	1.02420	1.02993	1.01108	1.02083	1.02245	1.02482	1.02966
Hastings (A) - Pt A	1.17945	1.23366	1.05263	1.16606	1.28936	1.18777	1.16970
Melbourne (C) - Inner	1.06213	1.08036	1.05110	1.05601	1.06027	1.05311	1.05408
Douglas (S)	1.11308	1.10991	1.03576	1.11404	1.12622	1.13138	1.07664
Perth (C) - Remainder	1.04875	1.05151	1.01232	1.05114	1.07470	1.05607	1.04042

TABLE 14: FACTORS FOR SEASONALLY ADJUSTED AND TREND ESTIMATES

	<i>Factors for takings from accommodation</i>
New South Wales	1.02739
Victoria	1.04388
Queensland	1.02968
South Australia	1.03241
Western Australia	1.02464
Tasmania	1.02043
Northern Territory	1.00636
Australian Capital Territory	1.02172
Australia	1.02997

GLOSSARY

Average length of stay	<p>Average length of stay is expressed in numbers of days and calculated:</p> <ul style="list-style-type: none"> ■ for hotels, motels and guest houses and serviced apartments, by dividing guest nights by guest arrivals ■ for holiday flats, units and houses, by dividing unit nights occupied by unit lettings.
Average takings per available room night	<p>The takings from accommodation divided by the total number of guest nights for the survey period,</p> $Avg.TakingsPerAvailableRoomNight(\$) = \frac{TakingsFromAccommodation}{(GuestRooms) * (No.OfDaysInThePeriod)}$
Average takings per room night occupied	<p>The takings from accommodation divided by the total number of room nights occupied for the survey period.</p>
Bed occupancy rate	<p>The bed occupancy rate represents bed occupancy expressed as a percentage of total capacity available during the survey period,</p> $BedOccupancyRate (\%) = \frac{GuestNightsOccupied}{(BedSpaces) * (No.OfDaysInThePeriod)} * 100$
Bed spaces	<p>Three-quarter beds are counted as one bed space; double beds as two bed spaces. Cots are excluded.</p>
Capacity	<p>Capacity in terms of guest rooms/units, visitor hostel bed spaces, holiday units or caravan park sites is the maximum number available to accommodate paying guests during the survey period. Capacity closed temporarily for seasonal reasons is included.</p>
Caravan park sites	<p>Includes on-site vans, other powered sites, unpowered sites and cabins.</p>
Establishments	<p>The number of hotels, motels and guest houses and serviced apartments, caravan parks and visitor hostels within the scope of the survey which operated for any part of the survey period, or which closed temporarily for the quarter for seasonal reasons.</p>
Guest arrivals	<p>The total number of paying guests counted only on the first night they stayed at the accommodation establishment during the survey period.</p>
Guest nights	<p>The total number of paying guests counted on each night they stayed at the accommodation establishment during the survey period.</p>
Guest rooms	<p>The maximum number of rooms available at each establishment during the survey period for accommodating short-term paying guests. Units and apartments within serviced apartments are treated as rooms in these survey results.</p>
Letting entities	<p>For holiday flats, units and houses, the number of owners, managers or real estate agents within the scope of the survey who operated for any part of the survey period.</p>
Long-term caravan parks	<p>Caravan parks where the majority of paying guests occupied sites for periods of more than two months.</p>
Occupancy	<p>Occupancy in terms of room nights, unit nights or site nights occupied refers to the total number of nights each guest room/unit or caravan park site was occupied during the survey period.</p> <p>Occupancy in terms of guest nights refers to the total number of paying guests counted on each night they stayed at the accommodation establishment during the survey period.</p>
Other sites permanently reserved	<p>The total number of powered and unpowered sites, on-site vans and cabins, etc. continuously let for two months or more of the survey period to tenants who occupy the sites only on a casual or sporadic basis.</p>
Persons employed	<p>The total number of persons working at each accommodation establishment at the end of the survey period (including working proprietors and those working on other than accommodation activities).</p>

GLOSSARY *continued*

Room nights available	The number of guest rooms/units available multiplied by the number of days for which they were available during the survey period. For establishments closing (other than for seasonal reasons) or opening during this period, operating periods only are included.
Room nights occupied	The number of nights each guest room/unit was occupied by a paying guest during the survey period.
Room occupancy rate	<p>The room occupancy rate represents room occupancy expressed as a percentage of total capacity available during the survey period,</p> $\text{RoomOccupancyRate (\%)} = \frac{\text{RoomNightsOccupied}}{(\text{GuestRooms}) * (\text{No.OfDaysInThePeriod})} * 100$ <p>providing that, for establishments closing (other than for seasonal reasons) or opening during the survey period, the denominator of the above expression includes only operating periods.</p>
Short-term caravan parks	Caravan parks where the majority of paying guests occupy sites for periods of less than two months.
Site nights available	The total number of nights each caravan park site was occupied during the survey period.
Sites occupied by long-term guests	The total number of sites, etc. occupied at the end of the survey period by guests who have stayed continuously for 2 months or more.
Star grading	The grading of hotels, motels and guest houses with facilities and serviced apartments is based on the classification system owned by AAA Tourism Pty Ltd. The gradings are allocated according to a points system based on the amenities and facilities available to guests. Details of the grading scheme are contained in the publication <i>Accommodation Guide</i> published by AAA Tourism Pty Ltd for each of the individual Australian Motoring Organisations. For the purpose of classifying establishments to a star grading in this publication, 'half' star gradings are ignored (e.g. a two and a half star grading has been shown as two star).
Takings from accommodation	<p>Since 1 July 2000, takings from accommodation include gross revenue from the provision of accommodation, including GST. Takings from meals are excluded. In cases where takings from accommodation data cannot be provided inclusive of GST the amount of GST payable is estimated and the data revised accordingly.</p> <p>Takings from accommodation for each month generally represent the takings received during that month. Where payments are received in advance of, or after the provision of accommodation to guests, the monthly figure for takings from accommodation may not necessarily bear a direct relationship to the number of guests accommodated during the month.</p>
Unit lettings	The total number of times a holiday flat, unit or house was occupied by a new tenant, counted only on the first night it was occupied by the new tenant.
Unit nights	The total number of nights each holiday flat, unit or house was occupied during the survey period.

FOR MORE INFORMATION . . .

- INTERNET* **www.abs.gov.au** the ABS web site is the best place to start for access to summary data from our latest publications, information about the ABS, advice about upcoming releases, our catalogue, and Australia Now—a statistical profile.
- LIBRARY* A range of ABS publications is available from public and tertiary libraries Australia-wide. Contact your nearest library to determine whether it has the ABS statistics you require, or visit our web site for a list of libraries.
- CPI INFOLINE* For current and historical Consumer Price Index data, call 1902 981 074 (call cost 77c per minute).
- DIAL-A-STATISTIC* For the latest figures for National Accounts, Balance of Payments, Labour Force, Average Weekly Earnings, Estimated Resident Population and the Consumer Price Index call 1900 986 400 (call cost 77c per minute).

INFORMATION SERVICE

Data already published that can be provided within five minutes will be free of charge. Our information consultants can also help you to access the full range of ABS information—ABS user pays services can be tailored to your needs, time frame and budget. Publications may be purchased. Specialists are on hand to help you with analytical or methodological advice.

- PHONE* 1300 135 070
- EMAIL* client.services@abs.gov.au
- FAX* 1300 135 211
- POST* Client Services, ABS, GPO Box 796, Sydney NSW 2001

WHY NOT SUBSCRIBE?

ABS subscription services provide regular, convenient and prompt deliveries of ABS publications and products as they are released. Email delivery of monthly and quarterly publications is available.

- PHONE* 1300 366 323
- EMAIL* subscriptions@abs.gov.au
- FAX* (03) 9615 7848
- POST* Subscription Services, ABS, GPO Box 2796Y, Melbourne Vic 3001



2863500012038

ISSN 1031 0770

RRP \$24.00